

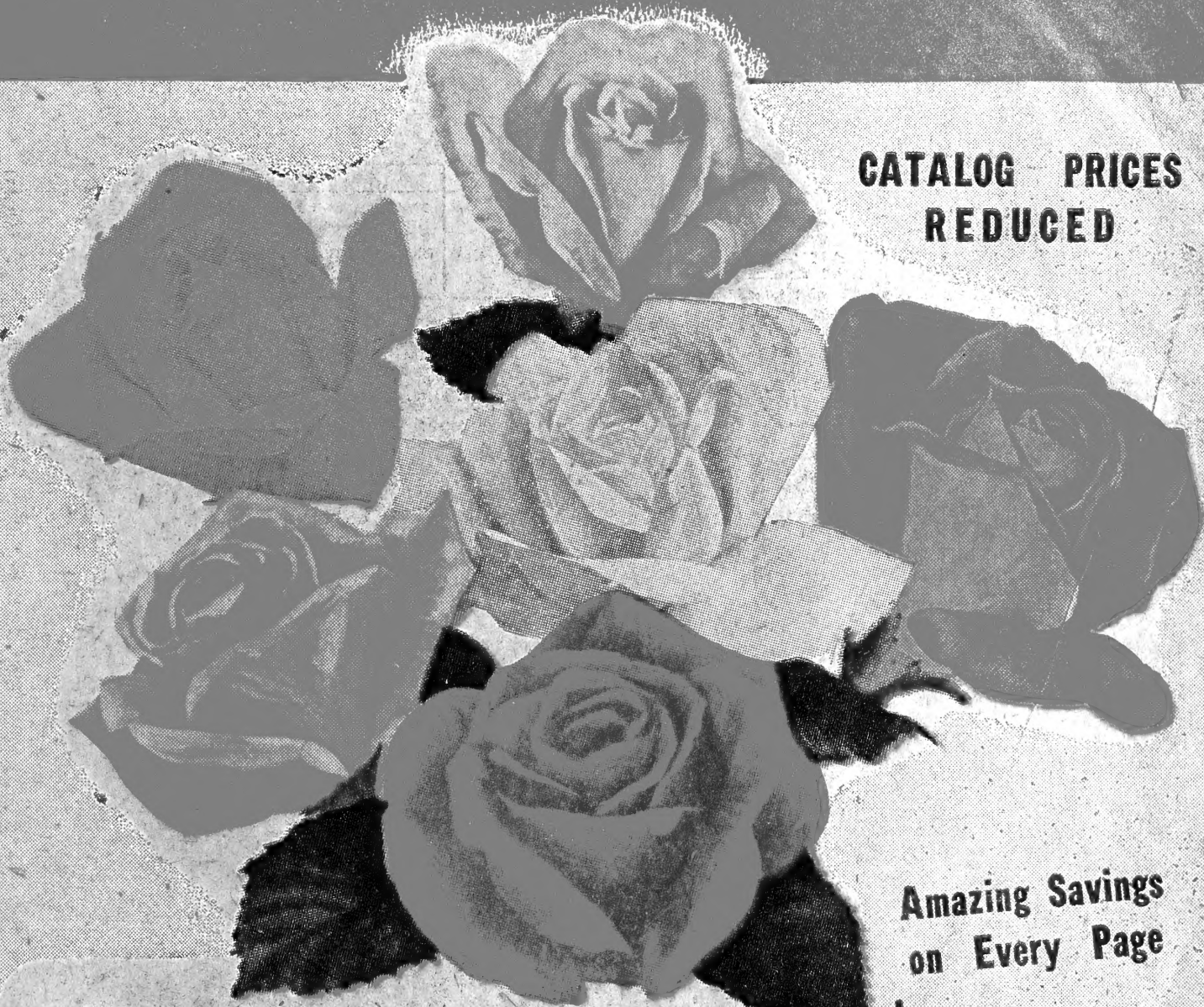
Historic, Archive Document

Do not assume content reflects current scientific knowledge, policies, or practices.



LIBRARY
D
APR 26 1950
U.S. Department of Agriculture

SPRINGHILL'S NEW 1950 BARGAIN CATALOG



**CATALOG PRICES
REDUCED**

Everblooming H. T. ROSE COLOR SPECIAL

EVERY ROSE WILL BLOOM THIS SUMMER—All are BUSH HYBRID TEA ROSES.—1R1—You get beauty in bud; colorful, large double flowers, abundant, continuous blooms, good foliage, vigor, fragrance, long stems. Mostly the same fine varieties listed in this catalog page 18 and 19. Spring Hill makes this offer at a special low price for those who care little for names but want lots of blooms; **GUARANTEED SATISFACTION.** One of each, scarlet, pink, yellow, bi-color, white and crimson. Spring Hill's selection of everblooming H. T. varieties, one of six different colors shipped unlabeled in bundles of six only.

Big, 2 yr., No. 1½
grade plants.

COLLECTION OF
6 for 2⁸⁹

Amazing Savings on Every Page

- Berries 6-7-8-9-24
- Bulbs 3-12-13-14
- Chrysanthem'ns 13-22-23-24
- Evergreens 10-11-24
- Fruit Trees 4-5
- Hedge Trees 16-17
- Perennials . . . 3-13-16-20-21
- Roses 18-19
- Shrubs 3-15-16
- Trees 3-16-17

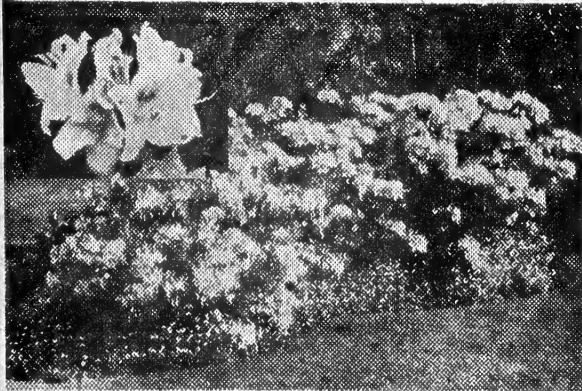
OUR 101st YEAR

SPRING HILL NURSERIES Tipp City, Ohio
RELIABLE HORTICULTURE SPECIALISTS & CONSULTANTS

Interesting
And Rare

Unusual Plants

At Big
Savings



CHINESE FLAME AZALEA (Mollis)—2S1—This hardiest of Azaleas has brilliant, frilled flowers in striking shades of scarlet to salmon and gold. Spring Hill's select imported Holland strain blooms so profusely the compact plants are completely covered with blooms for many weeks each spring. All azalea plants wrapped in acid peat. Plants will bloom for you this spring. Blooming size plants, 12 to 15 inches, \$1.65 each; 3 for \$4.55. 9 to 12 inch, heavy branched plants, 89c each; 2 for \$1.65; 6 for \$4.75.

EVERBLOOMING BUDDLEIAS



Strong pot plants guaranteed to bloom this summer for you. Continuous, profusion of blooms for several months. New, improved varieties.

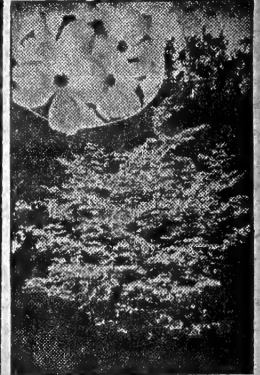
Dubonnet—2S9—Deep wine-red.
New Dawn—2S10—Large, soft-pink.
Ile De France—2S11—Velvet blue.
White Beauty—2S12—Snow-white.
Princess Wally—2S13—Lavender.

Choice of above 5 varieties of buddleias, blooming pot size, 35¢ each; 3 for 90¢.

BUDDLEIA SPECIAL

2S14—One each of above 5 varieties of Buddleia, each labeled. 2 inch pot size, guaranteed to bloom this summer.

5 for \$1.35.

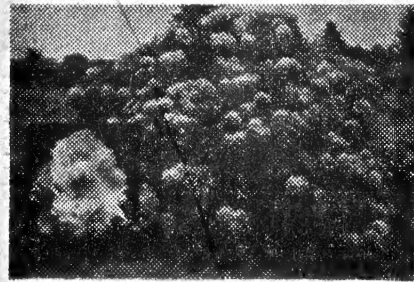


PINK FLOWERING DOGWOOD

2S8—(Cornus Florida Rubra) A magnificent sight when blooming. Big, rose-red blooms in early spring fill the dwarf, round headed trees. New low prices. Grafted, 1 ft. trees, \$1.15 each; 3 for \$3.25. 2 to 3 ft. size, \$3.50 each; 3 for \$9.75.

DWARF BURNING BUSH 2S5—(Euonymus Alatus Compacta)

Each fall the neat, compact plants are almost unbelievable in their brilliance of red foliage, no shrub attracts more attention. Neat green leaves all summer. Hardy, easy to grow. 4 yr. 1 to 1½ ft. plants, 95c each; 2 for \$1.75.



Black Magic Iris

VESPER IRIS — 2P3—Vesper iris is studded with hundreds of jewell-like flowers. Hardy, lovely, translucent, lavender blooms varied with markings of copper, lemon, orange, brown and trycan. It is impossible to describe. 29c each; 3 for 75c; 6 for \$1.40.

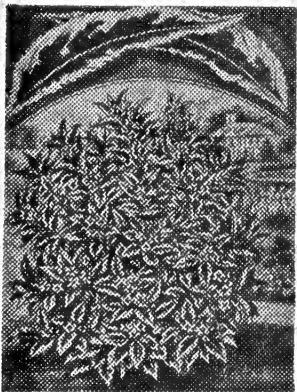


Vesper Iris

BLACK MAGIC IRIS—2P4—Exquisite, rich, velvety blooms, nearly black with satin sheen. Strong growing, free flowering semi-dwarf 18 (inches). Abundance of blooms each spring and again in fall. Highly recommended. 45c each; 3 for \$1.15.

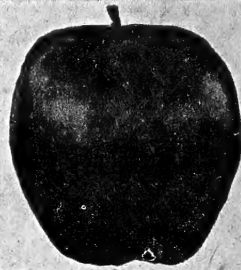
RHODODENDRON CATAWBIENSE GRANDIFLORUM 2S7—Gorgeous

lavender to lavender-pink flowers produced in masses are magnificent. The broad, leathery, evergreen foliage has a majestic dignity in winter. Catawbiense is the easiest to grow and most satisfactory hardy Rhododendron. In limestone areas or where soil is alkaline do not plant unless soil is made acid. 1 to 1½ ft. size, \$1.45 each; 3 for \$4.20.



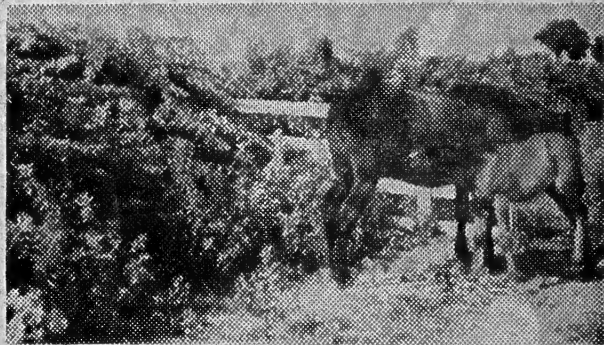
DWARF APPLES

2A2—Big, full size fruit on miniature early fruiting trees. Beautiful in flower. Choice of Cortland, Red and Yellow Delicious, 3 yr. fruiting age, 4 to 6 ft. trees \$4.25 each; 3 for \$11.95.



SILVER LEAF DOGWOOD 2S6—(Cornus Elegan-

tissima)—Foliage a mixture of silvery-white and green, beautifully patterned. Grafted plants, 2 yr., 1½ ft. size, 75c each. 2 ft. size, 95c each; 3 for \$2.65.



ROSA MULTIFLORA

A PRACTICAL, LIVING FARM FENCE

(Rose Multiflora)—2H20—A practical living farm fence. Rose Multiflora is recognized by U. S. Soil Conservation Service as a practical farm fence. Present recommendations are to plant 1 ft. apart in a single row. Above picture shows mature hedge. Plants are hardy and well adapted to most all soils and climates. Fine for game protection and the attractive plants are filled each fall with beautiful seed pods that are fine for game food. The general use of Rose Multiflora is just beginning but records prove its value for conservation and an inexpensive farm fence that will last for generations.

Big demand, limited supply. We suggest early orders. Reduced prices.

6-12 Inch	12-18 Inch	18-24 Inch
10 - \$.65	10 - \$.85	10 - \$ 1.25
25 - \$ 1.25	25 - \$ 1.75	25 - \$ 2.75
100 - \$ 3.95	100 - \$ 6.00	100 - \$10.00
1000 - \$30.00	1000 - \$50.00	1000 - \$90.00

FRENCH LILACS

MME. CASIMIR PERIER—2S15—Well-filled spikes of double, creamy-white flowers.

LUDWIG SPAETH—2S16—Free flowering, fragrant, choicest dark, red-purple lilac.

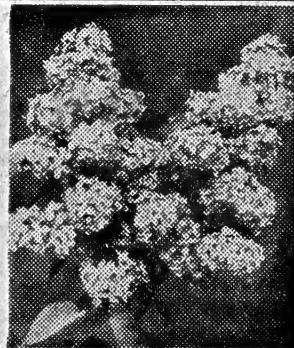
MARECHAL FOCH—2S17—Perfect shape, single, carmine-rose lilac, pink centers.

CHAS. X.—2S18—Dark red buds with reddish-violet blossoms of great beauty.

GENERAL PERSHING—2S19—Long trusses of large, double, purplish-violet blossoms.

Choice of above 5 French lilacs, strong 2 yr., 1½ ft. size, 89c each; 2 for \$1.70; 5 for \$3.98; 10 for \$7.85.

Choice of above 5 French lilacs, strong 3 yr. 3 ft. size, \$1.35 each; 2 for \$2.60; 5 for \$6.25; 10 for \$11.95.





TOM KYLE
Pres., Gen. Mgr.

101st Year Of



H. N. Kyle
son-in-law, sec'y-treas. 1909 to 1928



Peter Bohlender
founder 1849

Reliable Service



W. F. Bohlender
son and gen. mgr. 1912 to 1936



HOWARD KYLE
Vice Pres., Secy.

OUR GUARANTEE TO YOU

We guarantee high quality stock, exactly as represented, government inspected, true to name and to arrive safely in healthy, live growing condition. Any plants that reach you otherwise will be replaced free.

REPLACEMENTS—We guarantee our plants to grow, bloom and produce if given intelligent handling, proper planting and reasonable care. Weather conditions, carelessness, and lack of experience by the planter are conditions beyond our control; regardless of this, Spring Hill will replace any plants that fail to grow at half the original purchase price if notice is made One Month after delivery of your order. Please enter complaints immediately.

It is mutually agreed that our liability cannot be greater than your original purchase price. **GUARANTEED SATISFACTION.**

Dear Friends:

We shall always be glad to welcome you at Spring Hill where the plants we so highly recommend are grown. For 101 years Spring Hill has distributed nursery stock of high quality to many people throughout the world.

It is our desire to conduct all transactions to your satisfaction so you will tell how well you are pleased to others. We suggest you place your order early to avoid last minute rush. Each year it is pleasant to make new friends and greet old friends and to thank you for your encouragement, confidence and patronage.

Sincerely yours,

Tom and Howard Kyle

P. S. Everybody here in Tipp City knows us. The Tipp Citizens National Bank, Postmaster and Chamber of Commerce will vouch for us.

IMPORTANT INFORMATION FOR CUSTOMERS WHEN ORDERING

ORDERS ACKNOWLEDGED

We acknowledge all orders.

We return your original order with package for checking. **KEEP YOUR ORDER. IN EVENT OF ANY ERROR, CLAIM OR ADJUSTMENT,** it will be necessary for you to return your original order with your letter. If your order is not filled completely, you will be advised whether or not balance will follow later or amount of any shortage refunded to you.

WAR STAMPS ACCEPTED AS PAYMENT FOR YOUR ORDERS

HOW TO ORDER

Use order-blanks enclosed. List the variety of plants you want, state catalog number, size and price. Advise **DATE** you wish your order shipped.

TERMS AND REMITTANCE

All terms should be accompanied with remittance. Please mail Post Office Money Order, Express Money Order or Personal check. Spring Hill cannot be responsible for currency, stamps, war stamps or cash (wrap coins securely) unless sent by registered mail.

NO C. O. D. ORDERS ACCEPTED

MAIL YOUR ORDER TODAY

IT'S EASY, SAFE AND ECONOMICAL. Our high grade plants at comparative prices represent some of the greatest values ever offered. Come, see for yourself or mail your order. Over 1,000,000 plants produced annually.



Inside view, America's largest nursery sales shed.



Hundreds of visitors each spring; you are always welcome.

NO AGENTS OR SALESMEN

When dealing direct you get full benefit of our guarantee.

PLEASE ADD POSTAGE IMPORTANT

(Transportation Notice) — When nursery stock or plants are to be shipped by parcel post. Please add 10% for Packing and Postage. This enables us to give our customers the lowest possible selling price for big, first class plants. If you do not include postage charges, your order will be shipped express collect or if requested, we will bill you for the parcel post. Most orders of \$3.00 or more can best be shipped by express. Ohio customers please add 3% sales tax. Note—Fruit and berry producing plants free from 3% Sales Tax.

Visit the Nursery

See our growing farms of over 500 acres and the big sales shed full of values this spring. Many **PRICE REDUCTIONS.**



Buy Direct

SUPERIOR QUALITY BIG SAVINGS . . .

FREE PLANTS. SEE BACK COVER

SPRING HILL NURSERIES CO.

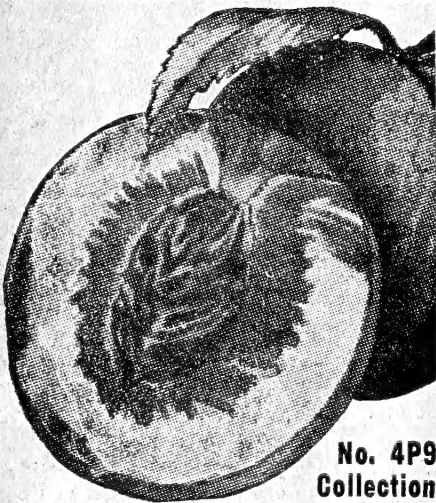
TIPP CITY, OHIO

Established 1849

ENJOY HOME GROWN FRUITS PLANT FOR ECONOMY

FOR TABLE-CANNING-JELLY OR JAM-HEALTH, FLAVOR

DELICIOUS HARDY PEACHES



No. 4P9
Collection

All Season Family Peach Orchard

- 1 RED HAVEN
- 1 LATE ELBERTA
- 1 GOLDEN JUBILEE
- 1 BELLE OF GA.
- 1 HALE HAVEN
- 1 ELBERTA

2 to 3 ft. size, see descriptions opposite. 6 for **\$2.50**

Regular \$3.60 catalog value.

No broken collections. Spring Hill's branched 2 to 3 ft. trees used in this collection usually bear fruit second year. This is an outstanding offer.

ELBERTA 4P1—Juicy golden-yellow freestone. The old reliable, most popular.

EARLY ELBERTA 4P2—Like Elberta but bears two to three weeks earlier.

LATE ELBERTA 4P3—Extend the peach season 2 to 4 weeks later than Elberta.

BELLE OF GEORGIA 4P4—Fine big red blushed freestone; creamy white flesh.

J. H. HALE 4P5—Extra large golden, tender, yellow freestone. Superb quality.

NEW RED HAVEN 4P6—Extra early freestone; big crops. Highly recommended.

GOLDEN JUBILEE 4P7—High yielding, early yellow freestone. Fine quality.

HALE HAVEN 4P8—Big golden freestone fruits. Best new variety since Elberta.

Peach Tree Prices

Choice of above 8 varieties of peach trees. Guaranteed U. S. Standard Grades.

Description & Cat. No. see above	Price Each	Price of 3 Trees	Price of 6 Trees	Price of 25 Trees
Size Trunk Diameter				
Good, 3-4 ft. 7/16" to 9/16"	\$.80	\$2.25	\$4.20	\$15.00
Better, 4-5 ft. 9/16" to 11/16"	1.25	3.60	6.90	26.25
Best, 5-6 ft. 11/16" up, giants	1.79	5.10	9.90	38.75

NECTARINES

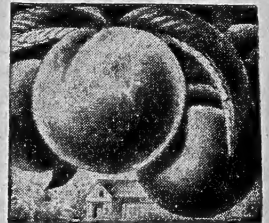
SURE CROP NECTARINE 4P10—Unusual, delicious sweet fruits with thin smooth skin like a plum. Mellow, rich, juicy, flesh like peaches. Unequaled for eating, fresh or canned. Trees and fruit resemble peaches and can be grown where peaches grow. Trees bear young—usually 2nd year. 2 to 3 ft. tall, branched trees, \$1.39 each; \$2.55 for 2; \$7.40 for 6. 5 to 7 ft. giants, branched trees, \$2.75 each; \$5.30 for 2; \$15.50 for 6.

Write for growers special low quantity prices.

SPRINGHILL'S HARDY APRICOTS

MOORPARK 4A11—Extra large freestone, golden-orange fruit; sweet and juicy. Recommended.

SUPERB 4A12—Unsurpassed for canning, eating, drying; delicious medium-size freestone.



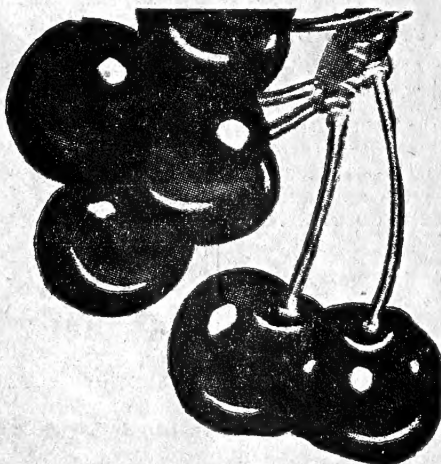
Prices for Moorpark & Superb Apricots

Description & Cat. No. see above	Price Each	Price 2 Trees	Price 6 Trees
Age, Height & Trunk Diameter			
2 yr., 2 to 3 ft., 5/16 to 9/16"	\$1.00	\$1.79	\$ 5.10
2 yr., 4 to 5 ft., 9/16 to 11/16"	1.70	3.19	9.30
3 yr., giants, 5 to 7 ft.	2.50	4.75	13.95

HYBRID APRICOTS

HUNGARIAN HYBRID APRICOTS 4A14—Beautiful hardy, dwarf trees, excellent fruit. Plant two or more trees for cross pollination. Big crops, high quality. 1 yr., 1 1/2 ft., 2 for \$1.25; 6 for \$3.30; 2 yr., 3 ft. size, \$1.15 each; 3 for \$3.15; 6 for \$4.75.

CHERRIES



SOUR CHERRY MONTMORENCY 4C15—Universally recognized the best sour cherry. Bears very young; large fruit. Highest yielding canning and pie cherry.

SOUR CHERRY EARLY RICHMOND 4C16—First sour cherry to ripen. Medium-size fruit; but unsurpassed for pies, and requires less sugar for canning.

SWEET CHERRY ROYAL ANN 4C17—Popular sweet cherry for canning and eating. Golden amber with red blush. Large, firm, juicy; bears enormous crops.

SWEET CHERRY BLACK TARTARIAN 4C18—Nation-wide popularity. Large heart-shaped, rich dark purple, famous ox-hearts (almost black) fruits. Sweet flavor.

Prices of Cherry Trees

Alike or Assorted. State Name and Cat. No.

	Trunk Diameter	Price Each	Price of 3 Trees	Price of 6 Trees	Price of 25 Trees
3 ft.	7/16 - 9/16"	1.25	3.60	6.90	27.50
3 1/2-4 ft.	9/16 - 11/16"	1.65	4.75	9.15	37.00
4 1/2-5 ft.	11/16 inch up	1.95	5.70	11.00	44.50

MONTMORENCY CHERRY SPECIAL 4C19—The same select strain of young bearing, giant fruiting Mont's in small size, identical except for size of trees. Big Savings—this offer repeated by customer requests. These small trees often bear fruit second year. 2 to 3 ft., 5/16 to 7/16 inch caliper, 79c each; 6 for \$4.20; 25 for \$16.25..... **3 for \$2.20**

New And Better APPLES

ANOKA 5A1—Red striped fruit for cooking and eating. Ripens in August.

LODI 5A2—Early, large, hi-quality, golden apple. Splendid to cook or eat.

YELLOW TRANSPARENT 5A3—Very early, high yielding, golden variety.

DOLGA CRAB APPLE 5A4—Brilliant scarlet fruit; fine for canning, jellies, etc.

RAMBO 5A5—Abundance of great, big, red striped apples. Prized for flavor.

WEALTHY 5A6—Leading summer red striped apple for cooking, cider, and eating.

McINTOSH 5A7—Bright red tangy apple, fine to cook and eat; unsurpassed quality.

JONATHAN 5A8—High quality red apples to cook and eat; dependable.

GRIMES GOLDEN 5A9 — Dependable, big, fall ripening. Long a favorite.

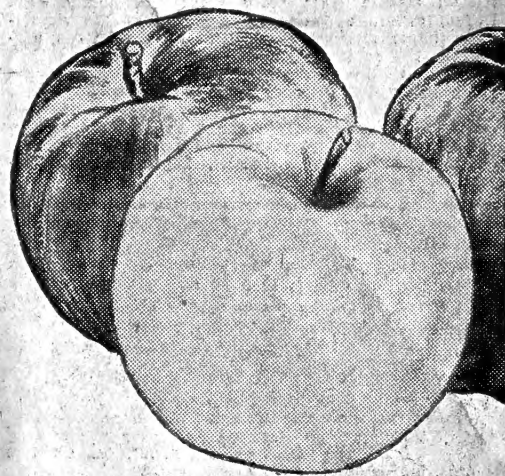
DOUBLE RED RELICIOUS 5A10—World's favorite for color, mellowness, and flavor.

YELLOW DELICIOUS 5A11 — Shape, size and quality of Red Delicious.

DBL. RED STAYMEN WINESAP 5A12—Famous for size, quality, cooking, and eating.

RED BALDWIN 5A14—Rich red apples that keep into winter. Big crops.

RED ROME BEAUTY 5A15 — Late keeping, high yielding, big bright red.



All Season Home Orchard

Fresh apples nearly every day in the year. 5 apple trees plus 1 pear tree. You get 1 YELLOW TRANSPARENT, 1 WEALTHY, 1 GRIMES GOLDEN, 1 DOUBLE RED WINESAP, 1 DOUBLE RED DELICIOUS.

Plus FREE Pear Tree

Cat. No. 5A16, 3-4 ft. size..... **\$2.95**

Cat. No. 5A17, 4-6 ft. size..... **\$5.25**

Cat. No. 5A18, 6-7 ft. size..... **\$11.00**

FREE with each collection any size, one 2 year pear tree, our choice.

Apple Tree Prices for summer, fall and winter varieties.

Description, catalog no., see above AGE, SIZE & TRUNK DIAMETER	Price Each	Price 3 Trees	Price 6 Trees	Price 12 Trees
GOOD, 2 yr., 3-4 ft., 7/16 to 9/16"	\$.79	\$2.15	\$3.90	\$6.95
BETTER, 2 yr., 4-6 ft., 9/16 to 11/16"	1.25	3.45	6.60	12.35
BEST, 3 yr., 6-7 ft., Quick crop, 11/16" & up	2.40	6.95	13.60	26.40

AMERICA'S Finest Hardy PLUMS

Stanley Prune 5A19—Best for home or commercial use; bluish purple, sweet and firm.
Burbank 5A20—Big, bright red plum fruit of excellent quality. Big, profitable crops.
Yellow Egg 5A21—Rich, golden plums with delicious sugar flavor. Fruit extra large.
Giant Prune 5A22—Big, dark blue freestone; sweet, mellow yellow flesh; heavy crops.
Improved Shropshire Damson 5A23—Small, bright plums fill trees. Fine for canning.

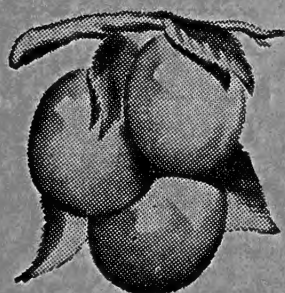
FREE planting instructions mailed with each order.

Plum Tree Prices

Reduced 33 1/3%

Choice of above 5 varieties of plum trees. Honest U. S. Standard grades.

Description & Cat. No. see above. AGE, HEIGHT AND TRUNK DIA.	Price Each	Price 3 Trees	Price 6 Trees
2 yr., 3 to 4 ft., 7/16 to 9/16"	\$1.25	\$3.45	\$ 6.60
3 yr., 5 to 7 ft., 11/16" up	2.00	5.70	11.10



SPRINGHILL'S QUALITY PEARS

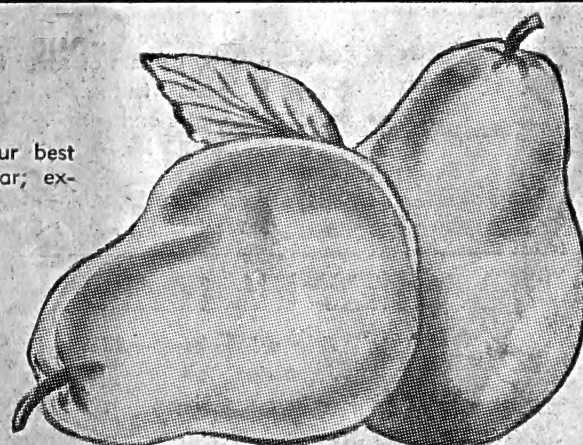
SECKEL 5A24—The well known sugar pear, prized for its flavor and eating.

DUCHESS 5A25—Largest, sweet, mellow, mid-season pear. Large yields.

BARTLETT 5A27 — Universally popular; sweet, delicious golden fruits.

IMPROVED KIEFFER 5A26—Our best winter pear; excellent for canning and eating.

MAXINE 5A28 — Extra large, excellent quality. Sells at premium prices.



Big, Bartlett Pears on dwarf trees

Dwarf Bartlett Pear—5A29—Full size fruit on beautiful miniature trees. Will bear first or second year, special dwarfing root stock made trees blight resistant. Ideal for city lot planting. Reduced price, big, 3 yr. size, 3 to 4 ft. tall

\$2.85 each **2 for \$5.50** 6 for \$15.90

PEAR TREE PRICES Choice of above 5 varieties, alike or assorted

Size	Trunk Diameter	Price Each	3	6	12
4-5 ft.	9/16 to 11/16"	1.35	3.75	7.20	13.80
6-7 ft. giants	7/8 to 1 inch	1.95	5.55	10.80	21.00

5 Kinds of PEARS ON ONE TREE 5P29—5 kinds of pear on one tree—Seckle, Bartlett, Kieffer, Duchess and Maxine all on the same tree. Interesting and beautiful tree for your yard. Each tree guaranteed a good assortment of varieties. 4 to 5 ft. trees, \$2.75 each; 2 for \$5.90. 3 to 4 ft., \$1.65 each; 3 for \$4.75.

Registered Raspberries

Ohio Small Fruit Improvement Association's Registered Raspberries

Almost disease free; every plant individually hand tipped, graded and dug by members of the Association under strictest inspection and regulations permitting 1% or less virus disease and not more than 1/4% of gall in parent plants. Spring Hill does not recommend you purchase these extra quality plants unless you can plant them away from uninspected raspberries. An isolated patch with proper care will far outyield ordinary plants and remain healthy for years. We can supply Bristol, Logan and Cumberland in registered plants.

Prices of Registered Raspberries

All Top Grade and Size Plants. Descriptions see below.

Variety	Cat. No.	5	10	25	50	100	500
Cumberland	6RR1	\$1.00	\$1.75	\$2.80	\$4.95	\$8.75	\$32.00
New Logan	6RR2	1.00	1.75	2.80	4.95	8.75	32.00
Bristol	6RR3	1.15	1.90	3.00	5.50	9.50	35.00

RASPBERRIES

Healthful . . . Profitable
Certified Plants . . . Best Varieties

Spring Hill's raspberry plants have been examined two or more times by the Ohio Division of Plant Industry and meet the rigid, disease free specifications of the Central Plant Board.

NEW LOGAN 6R4—Recommended, as the best home and commercial black raspberry. Big crops, outyields Cumberland, of equal size, color and better quality. **Top grade tip plants, 5 for 75c; 10 for \$1.25; 25 for \$2.25; 50 for \$4.15; 100 for \$7.50; 500 for \$25.00; 1,000 for \$42.50.**

NEW BRISTOL 6R5—Growing in favor and popularity for home and commercial planting. Mid-season, fine for freezing and canning. Highest quality, large black fruits of excellent flavor. **Top grade tip plants, 5 for 90c; 10 for \$1.50; 25 for \$2.50; 50 for \$4.50; 100 for \$7.85; 500 for \$27.50; 1000 for \$47.50.**

CUMBERLAND 6R6—The old standard black raspberry. The most popular variety for years. Our strain of Cumberland is very good, however our supply is limited. **Top grade tip plants 5 for 75c; 10 for \$1.25; 25 for \$2.25; 50 for \$4.15; 100 for \$7.50; 500 for \$25.00; 1,000 for \$42.50.**

Quick Crop Cumberland 6R7—Bigger size, stronger rooted. **5 for \$1.15; 10 for \$1.90; 25 for \$3.25.**

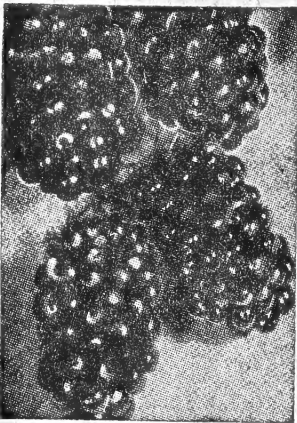
SODUS 6R8—New, giant purple raspberry. A recent New York Experiment Station introduction without an equal in its class and color. **Top grade tip plants, 5 for \$1.20; 10 for \$2.00; 25 for \$3.50; 50 for \$5.90; 100 for \$10.25; 500 for \$37.00.**

INDIAN SUMMER 6R9—(New, Giant, Everbearing Red Raspberry)—The best everbearing red raspberry, earliest to ripen, bears a full crop in June and an immense crop in the fall. A sensation because of its size, flavor and unusual beauty. **Extra select plants, 5 for \$1.15; 10 for \$1.90; 25 for \$3.75; 50 for \$7.00; 100 for \$12.50.**

GIANT LATHAM 6R11—Universally the most popular red raspberry. Big, sweet, juicy, red berries on tall, strong, thrifty plants in greatest abundance. Thrives in all sections where raspberries can be grown. **Choice first-grade plants, 5 for 90c; 10 for \$1.65; 25 for \$3.50; 50 for \$6.50; 100 for \$11.00; 500 for \$34.00.**

QUICK CROP INDIAN SUMMER 6R10—Jumbo plants, **3 for 85c; 6 for \$1.50; 12 for \$2.65.**

QUICK CROP LATHAM 6R12—Bigger size, stronger rooted. **5 for \$1.25; 10 for \$2.15; 25 for \$4.00.**



Blackberries • Dewberries • Elderberries

BLACKBERRIES

Eldorado—6B13—Heavy bearing, large fruiting strain from beargr patch. (Not usual root cutting plants that are shy bearers of small fruit.) Big crops of juicy highly-flavored fruit. Excellent for freezing, canning, juice, jams, pies and eating. **Large plants, 6 for \$1.10; 12 for \$1.55; 25 for \$2.50; 100 for \$9.50; 500 for \$40.00.**

Quick Crop Eldorado—6B14—Bigger size, better rooted. **5 for \$1.35; 10 for \$2.25; 25 for \$4.50.**

DEWBERRIES

Lucretia—6B15—Early fruiting, ripens two weeks ahead of other berries. Easy to grow, hardy, healthy plants that yield big crops each year. Large, delicious black berries are sweet and juicy. Excellent for freezing, cooking and eating fresh. **Reduced prices, first grade plants, 6 for \$1.00; 12 for \$1.45; 25 for \$2.25; 100 for \$8.40; 500 for \$35.00.**

Quick Crop Lucretia—6B16—Large size, better rooted. **5 for \$1.15; 10 for \$1.85; 25 for \$3.75.**

NEW ELDERBERRY

Adams Elderberry—6B17—Best variety grown. Attractive, tall growing shrubs for your yard or garden. Heavy fruiting with tremendous clusters of large, juicy berries. Regarded far superior to the wild and common varieties. Makes splendid sauces, pies, jelly, juices and wines, etc. **Big fruiting size, 3 ft., 65c each; 3 for \$1.75; 6 for \$3.30; 25 for \$12.50.**

Spring Hill's True-to-Name, High Yielding Berries Are Worth More Money.

AMERICAN PERSIMMON

6T18 — Persimmons make fine, ornamental trees. For good fruit production plant 2 or more trees. The fruit ripens in fall and is not good till freezing weather. U. S. Dept. of Agri. bulletin reports persimmon the most nutritious fruit, excepting dates, grown in the U. S. **2 yr. 1 to 1 1/2 ft. size, 2 for 70c; 6 for \$1.75. 3 ft. size, 65c each; 2 for \$1.15; 6 for \$3.30.**



STRAWBERRIES

Plant for Economy . . . Many Will Fruit This Summer . . . All Government Inspected.

Low Prices . . . Hi Quality . . . America's Best For Every Home and Commercial Planting.

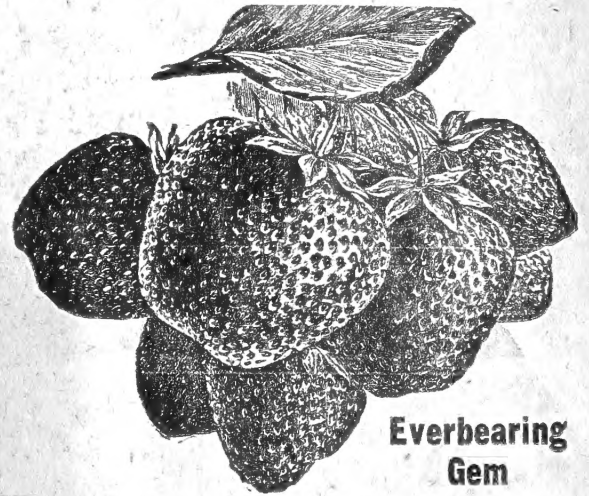
SCARLET BEAUTY (Robinson)—7S1—Large fruiting, highly productive; excellent growing, self-pollenizing variety. Big red berries (Large as golf balls). Unsurpassed for eating, canning and freezing. 25 for \$1.00; 50 for \$1.65; 100 for \$2.75; 200 for \$4.80; 500 for \$8.95; 1,000 for \$15.00.

PREMIER 7S2—Extra early ripening. Frost resistant, heavy yielding variety. Self-pollenizing. Reduced prices. 25 for \$1.00; 50 for \$1.65; 100 for \$2.75; 200 for \$4.80; 500 for \$8.95; 1,000 for \$15.00.

SPARKLE 7S3—New, outstanding, late ripening, red stele immune variety. Big crops of dark, glossy-red fruits. Excellent for freezing. Self-pollenizing, vigorous growing. 25 for \$1.25; 50 for \$2.00; 100 for \$3.50; 200 for \$6.25; 500 for \$11.25; 1,000 for \$19.50.

TEMPLE 7S4—U. S. D. A. red stele immune variety. Large, firm, sweet-flavored fruits in greatest abundance. Highly recommended for home and commercial plantings. 25 for \$1.25; 50 for \$2.00; 100 for \$3.50; 200 for \$6.25; 500 for \$11.25; 1,000 for \$19.50.

SENATOR DUNLAP 7S5—The old reliable! Planted by the million; unsurpassed for eating, preserving and freezing. Self-pollenizing. Reduced prices. 25 for 75c; 50 for \$1.25; 100 for \$2.35; 200 for \$3.75; 500 for \$7.50; 1,000 for \$12.00.



Everbearing Gem

Everbearing Strawberry Special COLLECTION 7S6

50 Gem	\$2.50
25 Streamliner	1.75
25 Superfection	1.90

Catalog value \$6.15

100 for \$4.95

All Season Strawberry Special—No. 7S7

50 Everbearing Gem	\$2.50	100 for \$2.98
50 Senator Dunlap	1.25	

Catalog value \$3.75

EVERBEARING GEM 7S8—Will bear fruit for you this summer and fall. Dependable and leading everbearing variety for home commercial plantings. Enormous yields. Hi-quality; good size and color. 25 for \$1.40; 50 for \$2.50; 100 for \$4.25; 200 for \$7.50; 1,000 for \$25.00.

EVERBEARING SUPERFECTION 7S9—Finest, new everbearing strawberry for a decade. We are reducing prices 33 1/3%. Begins bearing a few weeks after planting and will continue fruiting till winter. Fruit superb quality, delicious flavor. Self pollenizing. 25 for \$1.90; 50 for \$3.25; 100 for \$5.75; 200 for \$9.90; 500 for \$21.00.

EVERBEARING STREAMLINER 7S10—Delicious, radiant-red fruit this summer and fall. Excellent for canning and freezing because it is naturally so sweet. Self pollenizing. 25 for \$1.75; 50 for \$2.65; 100 for \$5.25; 200 for \$8.95; 500 for \$19.00.

Useful and Delicious NOVELTY FRUITS from Decorative Plants

VIBURNUM AMERICANA (High bush cranberry)—7F11—Fine, tall growing, ornamental shrub with big clusters of red berries all winter. Fruit makes fine jellies, jams and bird food. 3 yr., 18 inches, 75c each; 3 for \$1.95; 3 ft. size, \$1.10 each; 3 for \$2.98.

PROF. HANSEN'S BUSH CHERRIES 7F12—Dwarf, shrub-like plants with large, fruits the size of cherries. Heavy yielding; fine for jams, jellies, eating, etc. 3 to 4 ft. bearing age, \$1.00 each; 3 for \$2.50. 1 1/2 ft. size, 55c each; 3 for \$1.50; 10 for \$4.50.

FIGS IN THE NORTH THIS SUMMER

7F13—Fruit 1st summer. Plant now, fruit this fall! Plant outside, protect or bring inside each fall. Beautiful dwarf ornamental plants filled with delicious figs to eat from your own yard. Trimmed for planting. Make splendid ornamental pot plants indoors. 2 yr., 60c each; 3 for \$1.50; 3 yr., \$1.10 each.



Viburnum Americana



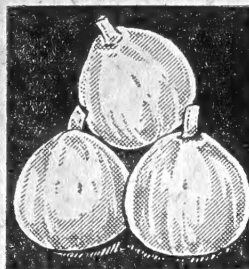
Prof. Hansens Bush Cherries



Nanking Cherry

NANKING CHERRY

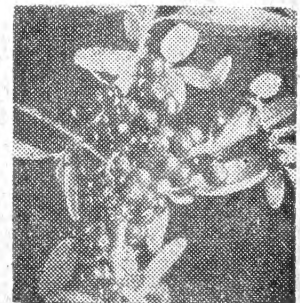
7F14—A beautiful dwarf growing, fully hardy oriental cherry. Shell pink buds and white blooms followed by abundance of delicious cherries. Bearing age, 3 ft. size, 75c each; 3 for \$1.98. 1 1/2 ft. size, 45c each; 3 for \$1.15.



Everbearing Figs
Page 7

BUFFALO BERRIES

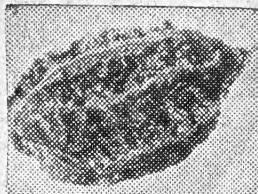
(Shepherdia)—7F15—Beautiful silvery foliage. Creamy-yellow flowers and scarlet-red fruits. Dried berries fine for seasoning. Also used for jellies and preserves. 2 ft. size, 65c each; 3 for \$1.75; 3 ft. size, 95c each; 3 for \$2.65.



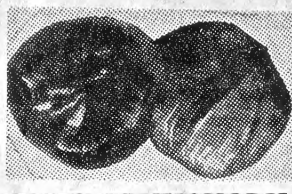
Buffalo Berries

**Finest Hardy
High Yielding**

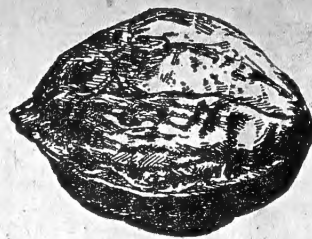
NUT TREES



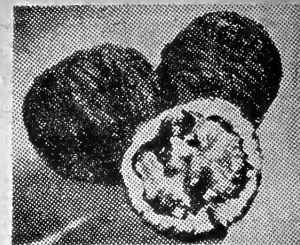
BUTTERNUT 8NT1—Big, pecan-shaped nuts with rich, white meat of wonderful flavor. Hardy, fast growing, high-yielding trees. Valuable for timber and shade. 2 ft. size, 40c each; 2 for 75c; 10 for \$3.45.



MAMMOTH HICKORY 8NT2—Grown from large seed. One of the most beautiful and sturdy trees that grow. Excellent for shade and big crops of nuts that taste so good. (Reduced prices). 2 ft. size, 65c each; 3 for \$1.75.



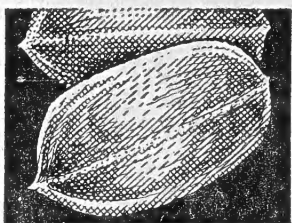
CHINESE WALNUT 8NT6—Tree is very handsome and has a large, spreading top, useful as well as ornamental. Begins to bear at age of three years. Shell moderately thick; kernel very sweet. 1 ft. size, 50c each; 3 for \$1.35; 10 for \$4.25. 2 ft. size, 2 for \$1.36. 3 ft. size, \$2.25 each; 3 for \$6.30.



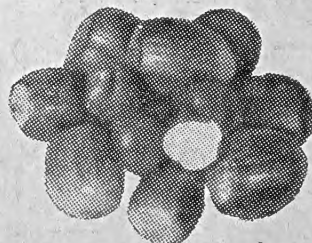
THOMAS WALNUT 8NT4—Improved black walnut of immense size with easy-to-crack thin shell. Trees grow fast, bear young and are early ripening. True strain, big, grafted trees, 4 ft. tall, \$2.65 each; 2 for \$5.10; 6 for \$14.75. 2 ft. size \$1.69 each, 3 for \$4.75



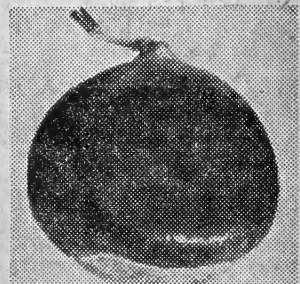
ENGLISH WALNUT 8NT5—Attractive, sturdy, broad-growing, semi-dwarf trees (20 ft. tall). Very ornamental with medium-size, easy-to-crack, high-quality nuts. Imported hardy strain. 2 to 3 ft., \$1.75 each; 3 for \$4.95.



HARDY PECAN 8NT3—Beautiful, rapid-growing trees that are sturdy as an oak. Bushels of fine quality plump pecans that are easy to crack. Northern grown strain. 2 ft. size, 69c each; 3 for \$1.85; 10 for \$5.75. 3 to 4 ft. size, \$1.50 each; 3 for \$4.25. Heavy, 5 to 6 ft., \$2.45 each; 3 for \$6.95.



AMERICAN HAZEL NUT 8NT7—Quick bearing, dwarf growing. Easy to crack, large, sweet kernels, shell out whole. The ornamental shrubby plants grow about 6 ft. tall and produce heavily. Fine for shrub borders or hedges. 1 ft. size, 40c each; 2 for 75c; 6 for \$2.10; 25 for \$8.25. Fruiting age, 3 ft., \$1.25 each; 3 for \$3.45; 6 for \$6.60.



MANCHURIAN CHESTNUT 8NT8—New, Oriental, blight-resistant chestnut of great beauty and utility. Grows successfully where native trees have died. Bears young. Big, sweet nuts compare in size and quality to native varieties. 2 ft. size, 79c each; 3 for \$2.25; 12 for \$8.40. Fruiting age, 5 ft. size, \$2.25 each; 3 for \$6.35. 1 ft. size, see 1c sale, page 16.

BLACK WALNUT 8NT9—Large, fruiting timber strain. Makes excellent, sturdy, tall, ornamental trees that yield heavily each year. Valuable for timber, shade and nuts with famous black walnut taste. 2 ft. tall, 2 for 36c; 10 for \$1.45. 3 ft. tall, 3 for 75c; 10 for \$1.95. Heavy, 6 to 8 ft., \$2.75 each.

RED LAKE CURRANT 8C18—Recommended. Large, high quality fruit. 2 yr., 60c each; 3 for \$1.50; 6 for \$2.65. 3 yr., 85c each; 3 for \$2.40.

WILDER CURRANT 8C19—Favorite with growers. Unexcelled. 2 yr., 50c each; 3 for \$1.20. 3 yr. fruiting age, 75c each; 3 for \$2.10.

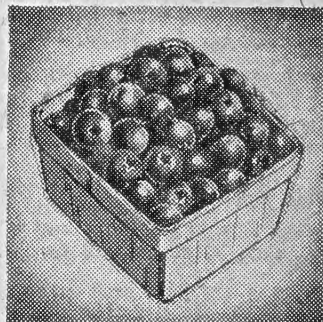
CHAMPION GOOSEBERRY 8G20—Large, green and gold berries. 2 yr., 70c each; 3 for \$1.80; 6 for \$3.30. 3 yr. fruiting age, 90c each; 3 for \$2.40; 6 for \$4.50.

RED JACKET GOOSEBERRY 8G21—Sweet, deep red fruit. 2 yr., 65c each; 3 for \$1.65. 3 yr. fruiting age, 80c each; 3 for \$2.15.

GIANT BLUEBERRIES

New, giant fruiting U. S. D. A. blueberries. Handsome, compact dwarf, thornless, plants with beautiful blooms and berries often large as grapes. For good yields plant 2 or more varieties. Blueberries require acid soil—use acid peat or mix aluminum sulfate with soil and organic matter.

Choice of: **CABOT—8BB10**—Early fruiting.
RANCOCAS—8BB11—Mid-season ripening.
JERSEY—8BB12—Late ripening.



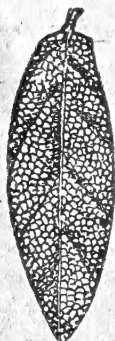
Low Blueberry Prices Plant 2 or more for cross-pollination. Your choice of all varieties listed.

Well branched and blooming size. Height and Age.	Price Each	2	4	6	12
Good, 2 yr., 6-12 in.	1.00	1.59	2.85	3.75	6.90
Better, 2 yr., 18 in.	1.55	2.70	4.95	6.98	12.45
Best, 3 yr., 2 to 3 ft. (Fruiting Age)	2.25	3.95	7.60	10.95	21.25

Acid Peat Moss for Blueberries

8PM13 - Blueberries prefer acid soil with abundance of organic matter as rotted manure, peat, or compost. SPRING HILL offers and recommends Acid Peat Moss for Blueberries. Highest grade Horticulture Acid Peat, \$1.00 per bag; 3 bags, \$2.50.

Holt's Mammoth Sage



8S14—One of our most beautiful, hardy flowering perennials for your garden. Useful as well as beautiful. The dried leaves indispensable for seasoning meats, sausage, stuffings, etc. Hardy plants grow for years without replanting. Handsome foliage and abundance of blue blooms cover the plants for weeks in late spring. 2 yr., 39¢ each; 3 for \$1.10; 1 yr., 27¢ each; 3 for 69¢; 6 for \$1.25.

6 for \$1.25

HARDY CHIVES



8C15—A perennial onion-like herb easy to grow. The finely-chopped leaves give a delicious flavor to hors d'oeuvres, salads, omelets, etc. You can cut plants throughout the season; pot and force indoors during winter. Bears attractive lavender blooms, a nice perennial plant in any garden. Save at Spring Hill's low prices. 2 yr. plants, 2 for 49¢; 6 for \$1.25. Big clumps 40¢ each; 3 for \$1.00.

3 for \$1.00

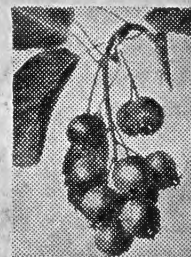
Snappy Horseradish



(Maliner Kren) 8C16—Grates up tender, crisp and white as snow, with nipny, sharp taste. Nothing better for flavor. Big crown plants, 25c each; 3 for 60c; 10 for \$1.75. Rooted cuttings, 3 for 42c; 12 for \$1.45.

12 for \$1.45

SERVICE BERRY



(Amelanchier) 8F17—Beautiful, and low growing white flowering shrubs. Abundance of rich, dark red apple shaped fruits splendid for cooking and eating. 1 1/2 ft. size, 70c each; 3 for \$1.75. 3 ft. size, \$1.10 each; 3 for \$2.98.

3 for \$2.98

GUARANTEED PLANTS • BUY WITH CONFIDENCE • SPRING HILL NURSERIES, TIPP CITY, OHIO

GRAPES



Home Vineyard Special

9G1—One red, white, and blue. Excellent selection for home and garden.
 1 Red Caco, 2 yr.50
 1 White Niagara, 2 yr.42
 1 Blue Concord, 2 yr.35
 Catalog value.....\$1.27

Save
20%



VAN BUREN 9G2—Best, new, extra early ripening, hardy black grape. 2 yr., 70c each; 3 for \$1.95. 3 yr., 90c each; 3 for \$2.50.

SENECA 9G3—New, hardy, skinless California grape. 2 yr., 90c each; 3 for \$2.50. 3 yr., \$1.25 each; 3 for \$3.50.

NIAGARA 9G4—Most dependable, favorite, hardy, white grape. 2 yr., 42c each; 3 for \$1.10. 3 yr., 55c each; 3 for \$1.45.

CONCORD AMERICA'S FAVORITE GRAPE

9G5—Most popular grape in the world. Big, dark blue, sweet, juicy fruit in abundance. 2 yr., 35c each; 3 for 79c; 6 for \$1.40; 25 for \$4.95. 3 yr., 45c each; 3 for \$1.15; 10 for \$2.85.

CACO 9G6—Delicious, honey-sweet, large, red fruit. 2 yr., 50c each; 3 for \$1.35; 3 yr., 65c each; 3 for \$1.75.

FREDONIA 9G7—Early ripening; vigorous growing blue grape. 2 yr. 45c each; 3 for \$1.15. 3 yr., 55c each; 3 for \$1.45.

GOLDEN MUSCAT 9G8—Big yellow California native grape cross. 2 yr., 70c each; 3 for \$1.95. 3 yr., 90c each; 3 for \$2.50.

BEARING AGE GRAPE VINES

9G9—Grapes from your own vines this fall. The vines we send have already produced one crop. **CONCORD ONLY:** trimmed for planting.

90c each; 3 for \$2.35

IT'S EASY TO GROW YOUR OWN

ASPARAGUS

GIANT WASHINGTON ROOTS—9A11
 —Grows well in most all soils and locations. When cared for, beds improve with age and last for many years. Fresh cut from your garden is best. Big annual yields. Giant Washington was developed under auspices of U. S. Dept. of Agriculture and is considered the leading variety. Practically immune to rust and has longest cutting period. Giant-size, straight tender, dark green stalks, tinged purple.

Size	6	12	25	100
1st class, 1 yr.	.49	.80	1.25	3.05
1st class, 2 yr.	.75	1.15	1.98	5.95
Jumbo, 3-4 yr.	.89	1.49	2.65	8.75



BOYSENBERRIES

Giant Thornless Boysenberry

9B12—The biggest berry ever developed. Large, fancy fruit often 1½ inches long of beautiful maroon color and superb quality. Excellent for eating, canning, freezing, juices, etc. No. 1 plants, 3 for 85c; 6 for \$1.40; 12 for \$2.45; 25 for \$3.95; 100 for \$14.75.



Quick Crop Thornless Boysenberry

9B13—Larger size, better rooted. 2 for 80c; 4 for \$1.45; 10 for \$3.25; 25 for \$7.50.

GIANT TASTY RHUBARB

CHIPMAN'S CANADA RED 9R14—Newest and finest rhubarb. The flesh is red from top to bottom and retains its color when cooked. Seedless and the sweetest—save on sugar. Pull all season, the long, thick stalks are so tender. Vigorous and productive. Hand cut No. 1 crown divisions. 89c each; 3 for \$2.50; 6 for \$4.65; 25 for \$18.75.

GIANT McDONALD 9R15—Massive stalks 2 to 3 times larger than common rhubarb. Also more red, sweeter, flavorful, and the plants are seedless. Tremendous yields. Spring Hill guarantees true, imported strain. Hand cut No. 1 crown divisions. 69c each; 3 for \$1.85; 6 for \$3.50; 25 for \$13.75.



LINNAEUS 9R16—The standard commercial variety for many years; grown from re-selected seed. 2 yr. whole roots, 3 for 65c; 6 for \$1.10; 25 for \$3.75.

JUMBO QUICK-CROP RHUBARB

Roots or divisions are much larger with more eyes so they will produce more and larger stalks quicker.

CHIPMAN'S CANADA RED 9R17—Jumbo division, \$1.35 each; 3 for \$3.75.

LINNAEUS 9R18—Quick crop, jumbo whole roots, 50c each; 3 for \$1.35.

GIANT McDONALD 9R19—Jumbo division, \$1.00 each; 3 for \$2.70.

Use our "Easy to Subscribe" MAGAZINE SERVICE—Enclosed in this catalog is a subscription order blank making it easy for you to order your favorite magazines at lowest prices. Save time, trouble and expense and be assured of safe, prompt service.

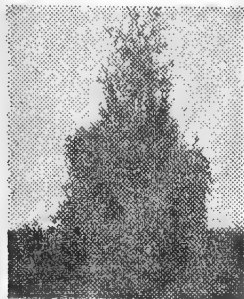
Merely send your order for the magazines you want to FARM JOURNAL SUBSCRIPTION SERVICE DEPT., Farm Journal Bldg., Philadelphia 5, Penn., together with check, money order or cash, covering the subscription prices of the magazines you select for your entire family.

Spring Hill **NURSERIES**
EST. 1849

GUARANTEED PLANTS *Buy With Confidence*

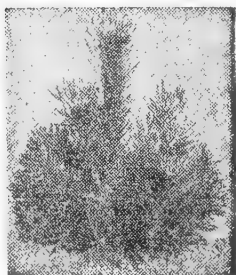
**Make
Big Money**

GROW YOUR OWN EVERGREENS FOR HOME BEAUTIFICATION
Economical, Interesting and Easy — Small Sizes Grow Fast. Low, Medium and Tall Growing Varieties. A Thrifty Purchase.



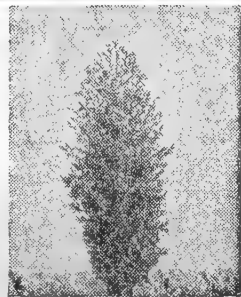
PYRAMID ARBOR VITAE

10E1—Dark green all year. Densely branched, grows naturally into tall, slender column. Very popular as a landscape variety. Pot plants, 8 to 10 inches tall, 50¢ each; 3 for \$1.35. Heavy (like picture) 15 to 18 inches tall, \$1.65 each; 2 for \$3.00. Big landscape size, 3 ft. tall, \$5.25 each; 2 for \$9.95.



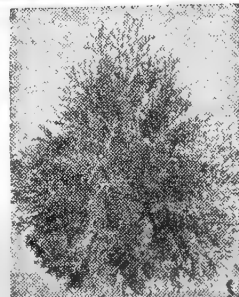
SCOTCH PINE

10E2—Long, dark green needles on thickly set branches, tall and fast growing, compact trees. Recommended for tall screens. 4 yr. transplanting size, 10 to 12 inches tall, 50¢ each; 3 for \$1.35. 6 yr., 12 to 15 inches tall, \$1.10 each; 2 for \$1.95. Big, landscape size, 3 ft. tall, \$4.50 each; 2 for \$8.50.



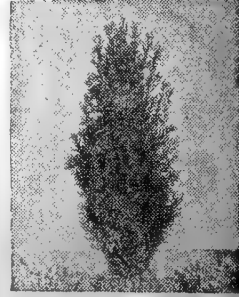
IRISH JUNIPER

(Fastigata)—10E3—One of our best, tall, narrow, formal evergreens. Rapid growing but does not grow over about 6 feet tall. Beautiful in any planting. Pot plants, 6 to 9 inches tall, 45¢ each; 3 for \$1.20. Heavy (like picture) 15 to 18 inches tall, \$1.35 each; 2 for \$2.45. Big, landscape size, 3 ft., \$4.50 each; 2 for \$8.50.



AMERICAN ARBOR VITAE

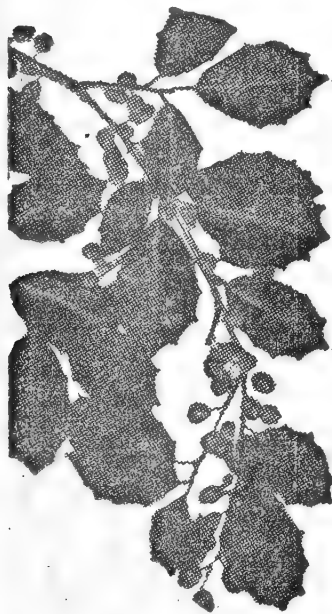
10E4—A good, fast, tall growing variety. Makes good screens, hedges and used in foundation and group plantings. 4 year, transplanting size, 8 to 10 inches tall, 35¢ each; 3 for 90¢. Heavy (like picture) 15 to 18 inches tall, \$1.45 each; 2 for \$2.65. Big, landscape size, 3 ft. tall, \$4.50 each; 2 for \$8.50.



TAXUS HICKSI

(Upright Columnar Yew)—10E5—Semi-dwarf, tall, narrow habit, columnar. Best evergreen for planting in shade. Most winter hardy and dependable. Pot plants, 8 to 10 inches tall, 50¢ each; 3 for \$1.35. Heavy (like picture) 15 to 18 inches tall, \$1.35 each; 2 for \$3.45. Big, landscape size, 2 to 2½ ft. tall, \$5.00 each; 2 for \$9.50.

BROADLEAF EVERGREENS



The following hardy shrubs have persistent foliage or the leaves stay on all winter. They add grace and charm to any planting in winter and summer. All bloom and have attractive berries. Grows in limestone or acid soils.

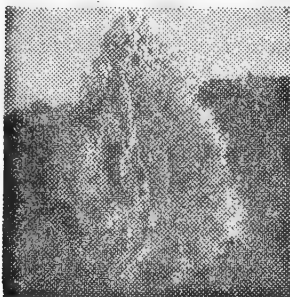
EVERGREEN FIRETHORN 10E6—(*Pyracantha Pauciflora*) New, dwarf strain famous for its scarlet fruit and attractive foliage; green winter and summer. Heavy, pot plants 8 to 10 inches, 70¢ each; 3 for \$1.95.

EVERGREEN BITTERSWEET 10E7—(*Euonymus Patens*) Grows two to three feet tall. Very popular, dwarf, bushy evergreen shrub. 6 to 8 inch pot plants, 50¢ each; 3 for \$1.35; 6 for \$2.50. 12 to 15 inch, \$1.35 each.

AMERICAN HOLLY 10E8—(*Ilex Opaca*)—Have your own Christmas decorations. Plant three or more for cross pollination. 8 to 10 inch, 35¢ each; 3 for 95¢. 1 to 1½ ft. size, 90¢ each; 3 for \$2.55.

HOLLY LEAF MAHONIA 10E9—(*Mahonia Aquifolia*)—Glistening green, holly-like foliage accented with reddish-brown tints. Clusters of attractive blue, grape-like fruits. Grows well in shade. Transplanting size 6 to 8 inches tall, 35¢ each; 3 for 95¢. 15 to 18 inches tall, \$3.45 each.

EVERBLOOMING ABELIA 10E10—(*Abelia Grandiflora*)—Dainty shell-pink, trumpet-shaped, blooms continuously throughout the summer. One of the best dwarf evergreen landscape plants. 9 to 12 inch, 45¢ each; 3 for \$1.20. 12 to 18 inch, 65¢ each; 3 for \$1.75. 2 ft. size, \$1.25 each; 3 for \$3.30.



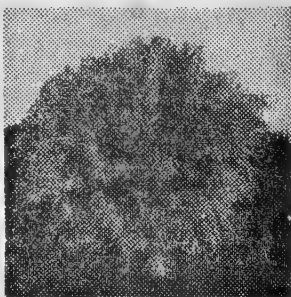
GOLDEN BIOTA

(Dwarf Golden Oriental Arbor Vitae)—10E11—Most attractive and perfect shaped of all dwarf, compact evergreens. Pot plants, 4 to 6 inches tall, 50¢ each; 3 for \$1.35. Heavy (like picture) 12 to 15 inches tall, \$1.65 each; 2 for \$3.00. Big, landscape size, 2 ft. tall, \$4.75 each; 2 for \$9.00.



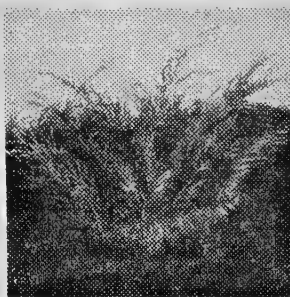
TAXUS SPREADING

(*Cuspidata*) — 10E12 — Horizontal, or spreading. The branches grow horizontal like Juniper Pfitseriana; likes shade. Pot plants, 8 to 10 inches tall, 50¢ each; 3 for \$1.35. Heavy (like picture) 15 to 18 inches tall, \$1.85 each; 2 for \$3.45. Big, landscape size, 2 ft. tall, \$5.00 each; 2 for \$9.50.



GLOBE WOODWARD

10E13—Best and most compact, dark green, dwarf symmetrical variety. Grows naturally in ball shape. Extra good for landscaping. Pot plants, 6 to 8 inches tall, 50¢ each; 3 for \$1.35. Heavy (like picture) 12 to 15 inches \$1.50 each; 2 for \$2.75. Big, landscape size, 2 ft., \$4.25 each; 2 for \$7.95.



JUNIPER PFITSERIANA

10E14—Best, most planted, fast growing, spreading, landscape evergreen for all sections and soils. Pot plants, 6 to 8 inches tall, 55¢ each; 3 for \$1.45. Heavy (like picture) 15 to 18 inches tall, \$1.65 each; 2 for \$3.00. Big, landscape size, 2 to 3 ft. spread, \$5.25 each; 2 for \$9.95.



SPINY GREEK JUNIPER

(*Excelsa Stricta*)—10E15—Attractive bluish-green foliage, dense, formal, conical-shaped, dwarf plants that do not require trimming. Pot plants, 4 to 6 inches tall, 45¢ each; 3 for \$1.20. Heavy (like picture) 12 to 15 inches tall, \$1.50 each; 2 for \$2.75. Big landscape size, 2 ft. tall, \$4.25 each; 2 for \$8.00.

DO YOUR OWN PLANTING . . . AMAZING SAVINGS



ENTRANCE GROUP

Special 28% Discount

No. 11E1

2 Pyramid Arbor Vitae,
matched pair, 3 ft. tall.....\$9.95

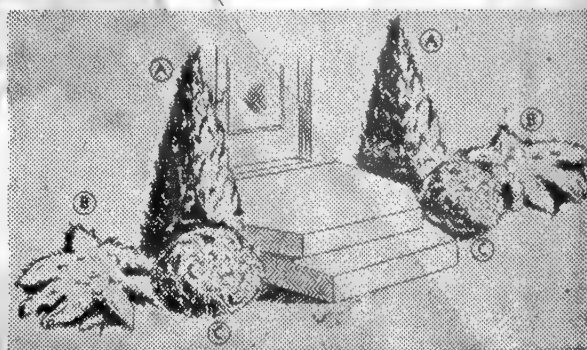
2 Globe Arbor Vitae,
matched pair, 2 ft. tall..... 7.95

Certified catalog value \$17.90

ALL FOR \$12.95

USE RA•PID•GRO

The pioneer in foliage feeding: A concentrated liquid plant food. See enclosed circular. 1 lb. \$1.25; 2 lbs. \$2.35; 5 lbs., \$4.50; 10 lbs. \$8.75.



DOORSTEP ENTRANCE GROUP 11E3

A—2 Pyramid Arbor-Vitae, 8 yr., 15-18 inch tall spire like, 2 for \$4.00.

B—2 Juniper Pfitseriana, 6 yr., 10-15 inch spreading, 2 for \$4.00.

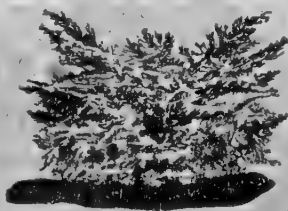
C—2 Globe Arbor-Vitae, 6 yr., 10 to 14 inch wide, 2 for \$4.00.

2 each of above 3 varieties junior landscape size shipped individually wrapped in finest grade peat. Peat is fine for evergreens, mix with dirt when planting. Regular \$12.00 value

All 6 for \$6.98

Evergreen Digging Notice

All evergreens for shipping will be fresh dug from our field bare root and wrapped in moist peat. Present day delivery and packing costs make it too expensive to ship balled and burlapped. Our experience shows that bare root evergreens deliver better and grow just as good. Balled and burlapped evergreens available when you drive to the nursery.



NEW BLUE JUNIPER PFITSER

11E2—The famous spreading juniper in new blue color. Strong 8 to 12 inch pot plants, 89c each; 3 for \$2.50.

101st ANNIVERSARY

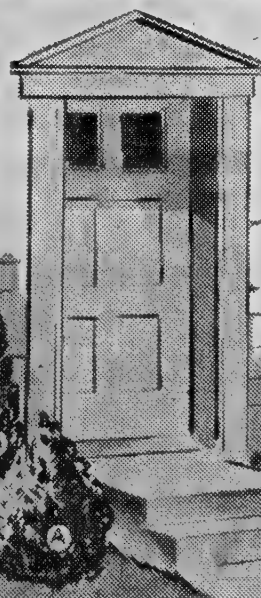
EVERGREEN SPECIAL

30 ft. Foundation Planting for \$39.95

11E4—Amazing savings! 12 big landscape size evergreens as pictured at 23% Savings. Guaranteed big, heavy plants as pictured. Descriptions see opposite page. Dug bareroot at the nursery for shipping to save delivery costs (see notice below). A complete 1st class planting, for less than you would expect to pay. F.O.B. Tipp City, Ohio.

All 12 Evergreens

\$39.95



- A—2 Dwarf Golden Biota, 2 ft. . . . \$9.00
- B—2 New Irish Juniper, 3 ft. . . . 8.50
- C—2 Globe Arbor Vitae, 2 ft. . . . 7.95
- D—2 Juniper Pfitseriana, 2 ft. . . . 9.95
- E—2 Spiny Greek Juniper, 2 ft. . . . 8.00
- F—2 American Arbor Vitae, 3 ft. . . . 8.50

Regular catalog value \$51.90

FOR ONLY

\$39.95



Norway Spruce

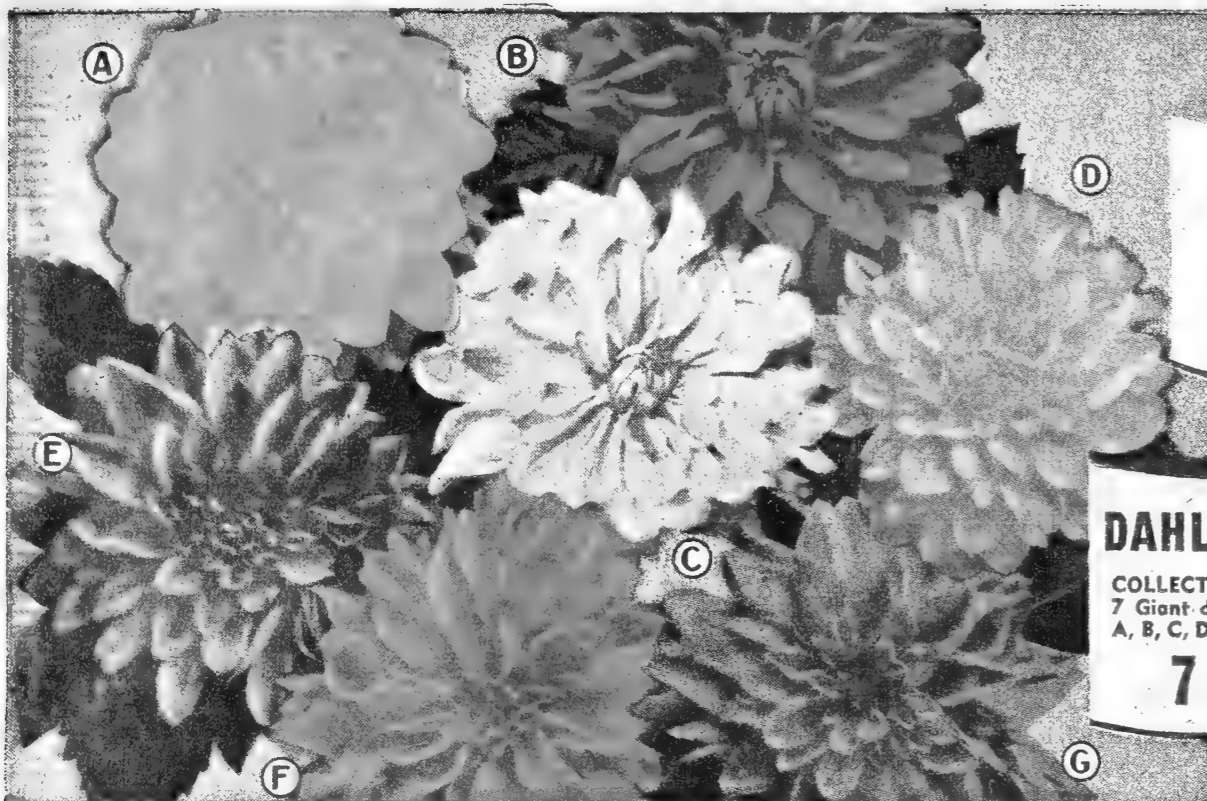
11E5—Most extensively planted outdoor living Christmas tree. Highly recommended for avenue and specimen plantings. Fast growing, tall, stately plants. Transplanting size, 6 to 9 inches tall, 40c each; 3 for \$1.05. Heavy (like picture) 15 to 18 inches tall, \$1.75 each; 2 for \$3.25. Big, landscape size, 2 to 2½ ft. tall, \$4.00 ea.

Colorado Blue Spruce

11E6—One of the showiest and most valuable evergreens. Perfect shape, impressive blue color add beauty and value to any property. Special savings. 1 inch transplanting size, 5 for \$1.00. 5 to 7 inch size, 2 for 61c. 2 ft. heavy (like picture) \$7.50 each.

Boxwood

11E7—(Buxus Sempervirens) Winter hardy, compact, dwarf variety. No other evergreen has the charm and beauty of Boxwood. Pot plants, 6 to 8 inches, 39c each; 3 for \$1.10; 10 for \$3.25.



Giant Greenhouse MUM Special

13C6 GARDEN OF 5 Greenhouse chrysanthemums, A, B, C, D, E, as pictured.

5 for \$1.39

DAHLIA Special

COLLECTION No. 12D8—7 Giant dahlias as pictured A, B, C, D, E, F, G (Labeled).

7 for \$2.55



Surprise DAHLIA Special

12D9 — Giant Flowering — Unconditionally guaranteed the greatest and finest assortment or large flowering types. Cactus, peony, show and decorative in assorted colors. Over 100 leading named varieties. Big savings for those who want abundance of beautiful blooms and care little for names of varieties. **Guaranteed Satisfaction. Strictly No. 1 hand cut roots.**

3 for 69c; 5 for 99c; 10 for \$1.79

Colorful Giant DAHLIAS

Guaranteed excellent continuous and free blooming champion Monarch's; beautifully colored; easily grown.

- | | |
|---|-----------------|
| (A) COMMODORE—12D1—Brilliant canary-yellow. | Choice of above |
| (B) MRS. GEO. BOUTILLIER—12D2—Big crimson. | 7 dahlias |
| (C) WHITE WONDER—12D3—Fluffy, pure white. | 40c each |
| (D) JOSEPHINE—12D4—Lovely bright rose-pink. | 3 for \$1.10 |
| (E) ROYAL PENNANT—12D5—Fine, Rich purple. | |
| (F) BASHFUL GIANT—12D6—Apricot-orange. | |
| (G) SANHICANS MONARCH—12D7—Tyrian-rose. | |

Giant Exhibition Greenhouse MUMS

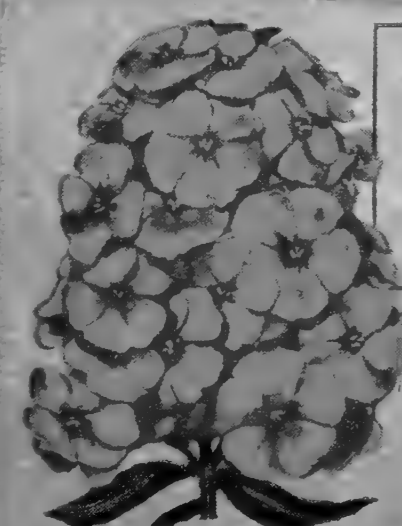
Five of the earliest blooming, giant greenhouse, incurved varieties, Successfully and easily grown to bloom in your garden this fall. Magnificent saucer-sized blooms when plants are fertilized and grown one bud to a stem. Not hardy in cold climates. Robust, pot plants guaranteed to bloom this fall. Choice of colors.

35c each

10 for \$2.75

- | |
|--|
| (A) GOLD LODE - 13C1 - Brilliant yellow. |
| (B) MRS. DAVID ROY—13C2—Crimson. |
| (C) SMITH'S EARLY WHITE—13C3—Big |
| (D) ALAMEDA - 13C4 - Rich, deep gold. |
| (E) MAJOR BOWES—13C5—Huge pink. |

SAVE MONEY on these Amazing Bargains



BIG SAVINGS!

Order Phlox by Color—13-P15—Spring Hill selects some of the best named phlox. Choice of White, Red, Blue, and Pink.

2 for 55c 10 for \$2.30
4 for 95c

8 Colorful, Giant HARDY PHLOX

Will bloom abundantly for you this summer and many more years. All are new, improved, large flowering varieties. All big No. 1 plants.

- | | |
|--|--------------------|
| JULY LIGHTS - 13P7 - Brilliant cherry red. | Choice of 8 |
| BORDER QUEEN - 13P8 - Lovely big, pink. | hardy phlox listed |
| MARY LOUISE - 13P9 - Finest clear white. | 36c each; |
| CHAS. CURTIS - 13P10 - Blazing scarlet. | 3 for 95c |
| BLUE BOY - 13P11 - Vivid lavender-blue. | 6 for \$1.75 |
| PRIME MINISTER - 13P12 - White red eye. | |
| SAN ANTONIO - 13P13 - Best Ruby Red | |
| SALMON GLOW - 13P14 - Orange-salmon | |



GLAD Color Special

12G24—Giant gladiolus in radiant colors. Choice of the six colors pictured, all giant No. 1 bulbs, guaranteed to produce the earliest and largest exhibition blooms. Selected from best cut flower, prize-winning varieties Choice of Orchid, White, Red, Yellow, Violet, and Pink.

6 qs pictured, one each unlabeled 6 for 40c
12 pictured, two ea. unlabeled 12 for 79c

Labeled bulbs, any number of any color
24 bulbs \$1.30 • 90 bulbs \$4.75

INTERNATIONAL GLADS

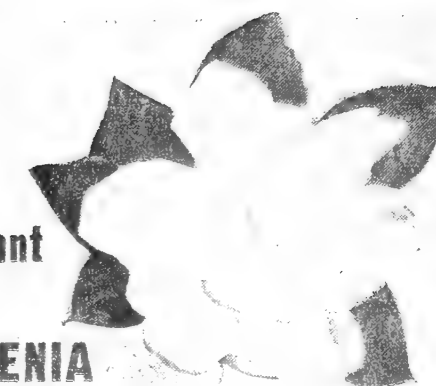
Collection 12G26—Amazingly beautiful colors. Thirty different varieties each described in general catalog; all are outstanding. One each 30 glads plus 3 Murielae sweet scented glads. Certified \$2.55 value.

SAVE 30%

All 33 Jumbo

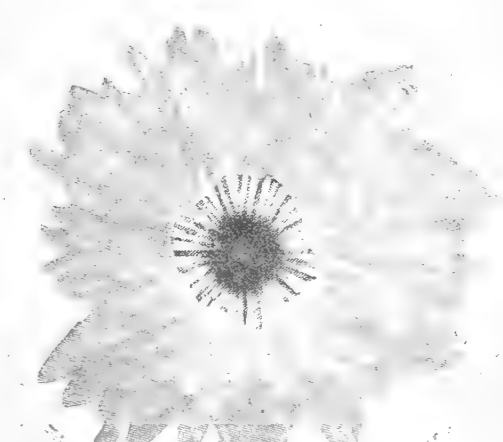
No. 1 bulbs for

\$1.78



Fragrant White GARDENIA

(Veitchi)—13C22—Exquisite fragrance, beauty and abundance of flowers. Not hardy North of Virginia. Excellent, free blooming house plants in North. 8 to 10 inch size, 49c each; 3 for \$1.25. Big, 12 to 15 inch, \$1.50 ea.; 3 for \$4.15



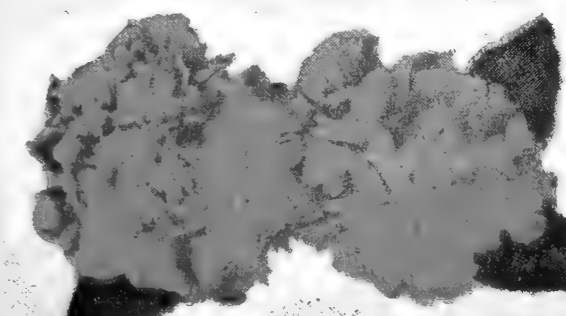
Hardy SPOON Mums

Long tubular petals like miniature spoons. Big blooms in profusion for long-lasting bouquets.

- | | |
|------------------------|------------------|
| LOVELINESS 13C16 Pink | Choice of above |
| MAGENTA—13C17 — Violet | Hardy Spoon Mums |
| IVORY — 13C18 — White. | 45c each |
| CARDINAL—13C19 — Red. | 3 for \$1.20 |
| CANARY — 13C20—Yellow. | 10 for \$3.75 |

13C21—Garden of 5, one each variety of spoon mums listed above (labeled)

5 for \$1.85



Crimson King CARNATION

13C23—Withstands zero temperatures. Beautiful, big, double, striking crimson-red flowers from early summer till fall for abundance of big blooms, plant in rich soil.

38c each

3 for \$1.00

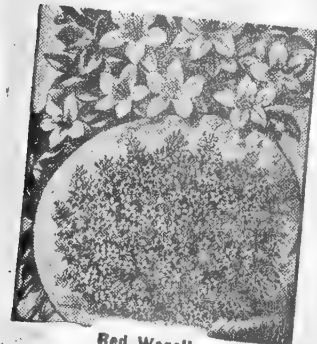
SPRING HILL'S HARDY SHRUBS

Beautiful Blooms and
Berries - Colorful
Foliage and
Branches

Barberry, Bridal
Wreath And Privet
See Hedge Plants
Page 17



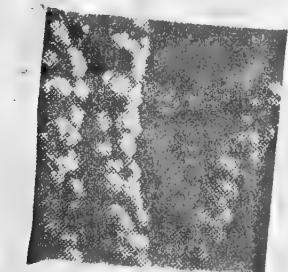
Sweet Shrub



Red Wegelia



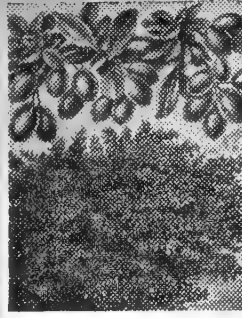
Golden Bell Forsythia



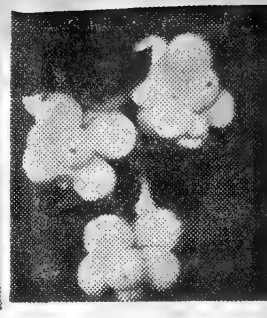
Pink Flowering Almond



Everblooming
Double Mock Orange



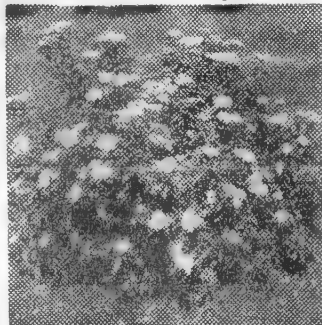
Red Leaf Barberry



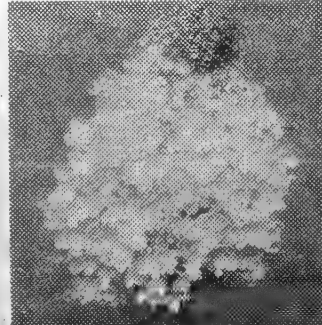
White Snowberry



Giant Pussy Willow



Everblooming Dwarf Red Spirea A.W.



Hydrangea P. G.



Old Fashion Lilac

- **SWEET SHRUB (Calycanthus) 14S1**.....40c each
Delightfully spicely fragrant, chocolate red blooms.....2 yr. 1 ft. size, 2 for 75c
- **BARBERRY RED LEAF (Thunbergi atropurpurea) 14S2**.....60c each
Bright red foliage all season; red berries in fall.....2 yr. 1½ ft. size, 3 for \$1.85
- **EVERBLOOMING RED WEGELIA (Eva Rathke) 14S3**.....80c each
Deep cardinal red blooms continuously all summer.....3 yr. 3 to 4 ft., 3 for \$2.15
- **ROSE WEGELIA (Abel Carrieri) 14S4**.....37c each
Big clusters of rose-red blooms.....Recommended, 1½ ft. size, 3 for 95c

Everblooming Double-Mock Orange

(Philadelphus Virginal) 14S5 — Big, double, thick, waxy white blooms from early spring continuously till fall. Neat plants growing 6 ft. tall. 1 ft. size, 55c each; 2 for 98c; 2 to 3 ft. size, 90c each; 3 for \$2.50.

**NEW
LOW
PRICES**

HYDRANGEA NIKKO BLUE

14S6—Giant, deep blue blooms; if soil is alkaline blooms change to pink. Give winter protection North of Ohio River. 1 ft. size, 60c each; 3 for \$1.65. 1½ ft. 2 yr. blooming size 90c each; 3 for \$2.55.

**NEW
LOW
PRICES**



Blue Spirea

- **GIANT PUSSY WILLOW (Salix Caprice) 14S7**.....40c each
Extra large, silvery-pink catkins. Fine for beauty.....1½ ft. size, 2 for 75c
- **OLD FASHION LILAC (Syringa Vulgaris) 14S8**.....75c each
Famous for profusion of fragrant lavender blooms.....2 to 3 ft. size, 3 for \$2.00
- **GIANT GOLDEN BELL (Forsythia Spectabilis) 14S9**.....37c each
Improved, upright growing; big flowers of intense yellow.....1½ ft. size, 3 for 95c
- **WHITE SNOWBERRY (Symphoricarpos Racemosus) 14S10**.....65c each
Excellent for shade; beautiful pink blooms and white berries.....3 yr., 2 ft., 3 for \$1.75
- **RED BUSH HONEYSUCKLE (Lonicera Zabeli) 14S11**.....45c each
Tall, vigorous, hardy shrub. Grows in sun or shade. Striking red flowers and fruit.....1½ ft., 3 for \$1.19
- **KASHGAR TAMARIX (Hispida) 14S12**.....55c each
Bright pink blooms; lacy silvery-blue evergreen like foliage.....2 ft. blooming size, 3 for \$1.50

BLUE SPIREA (Caryopteris Blue Mist) 14S13—Improved, hardy, dwarf variety filled with misty-blue flowers for weeks. Pot plants, 37c each; 3 for \$1.00. 2 yr., 75c each; 3 for \$1.95.

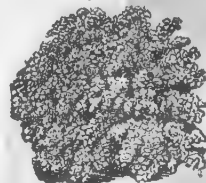
SPIREA ANTHONY WATERER (Dwarf Everblooming) 14S14—Rosy-crimson blooms on low, bushy plants all summer. 2 yr. 12 inch, 40c each; 3 for \$1.10. 3 yr., 18 to 24 inch, 85c each; 3 for \$2.35.

SPIREA VAN HOUTTEI (Bridal Wreath) 14S15—Most popular hardy shrub smothered with lovely white blooms each spring. 2 ft. size, 3 for 79c; 6 for \$1.45. 3 yr. 3 ft. size, 65c each; 3 for \$1.75; 10 for \$5.50.

ALMOND PINK FLOWERING—14S16—A most beautiful early pink flowering dwarf shrub. Fine for bouquets. 2 yr., 1½ ft. size, 49c each; 3 for \$1.35. 3 yr., 2 to 3 ft., 75c each; 3 for \$2.00.

HYDRANGEA PANICULATA GRANDIFLORA—14S17—Famous, giant blooming P. G. Massive snowy-white blooms change to rose-pink. 1 ft. size, 40c each; 3 for \$1.10. Heavy, 2 ft., 75c each; 3 for \$2.00.

RED BRANCH DOGWOOD (Cornus Siberica)—14S18—Bright red branches for winter color; clusters of white blooms and fruits very ornamental. 1 ft. size, 35c each; 3 for 98c. 3 ft. size, 75c each; 3 for \$2.10.

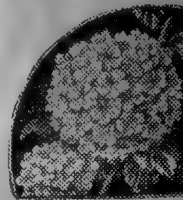


BEAUTY BUSH

(Kolkwitzia Amabilis)—14S19—Covered with thousands of lovely pink blooms that last for a long time. 3 yr., 2 to 3 ft. blooming size, 75c each; 3 for \$2.00. 12 inch tall pot size, 35c each; 3 for 85c.

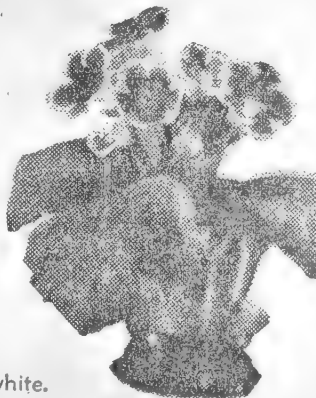
Old-Fashion Snowball

(Viburnum Opulus Sterilis)—14S20—Big, snow-white, round blooms. Excellent for bouquets. Beautiful, tall-growing plants. 1½ ft. size, 45c each; 3 for \$1.15. 3 ft. size, 85c each; 3 for \$2.35.



World's Finest Gloxinias

Brilliantly colored, mammoth flowering bulbs. Easy and simple house plant to grow; can be used over and over again. Gorgeous bell-shaped flowers and soft downy conspicuous leaves. Plant one bulb in a pot, cover with rich soil and set in warm, sunny location. Don't wet leaves—water from below.



FIREKING—15G7—Crimson-scarlet.

MONT BLANC—15G8—Snow-white.

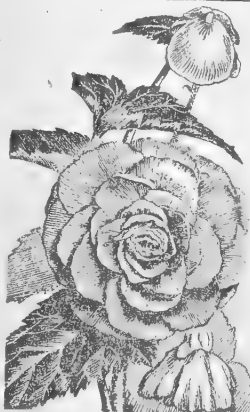
PRINCE ALBERT—15G9—Rich blue.

TIGRINIA—15G10—Spotted and laced varieties of all colors.
Choice of above gloxinias

44c each; 3 for \$1.15; 6 for \$2.10

Camellia Flowering TUBEROUS BEGONIAS

Exquisite and lovely as expensive camellias which they resemble. Improved Belgium giants (often large as coffee cups). Grow in well drained rich soil and partial shade. Not hardy. Pot and force indoors during winter.



YELLOW—15B1

CRIMSON—15B2 **ORANGE—15B4**

PINK—15B3 **WHITE—15B5**

Big blooming 3½ to 4½ c. m. size imported bulbs,
35c each; 3 for 89c; 6 for \$1.65

BEGONIA SPECIAL

Tuberous Begonia—15B6—Double Camellia Flowering. Exactly the same colors of Double Camellia flowering except smaller bulbs. Guaranteed blooming size, 2½ to 3½ c. m. bulbs. Five colors (Unlabeled) yellow, white, pink, crimson and orange. **3 for 45c 6 for 72c; 12 for \$1.25.**

Lilies

Dependable and easy to grow hardy garden lilies. Bulbs multiply each year.

DOUBLE LILY (Tigress Fl. Pl.)—15L11—Rich salmon-orange. Big 6 to 7 inch blooming size, 50c each; 3 for \$1.25.

CORAL LILY (Tenuifolium)—15L12—Vivid deep scarlet. 3 to 4 inch blooming size, 36c each; 3 for 95c.

RED FUNNEL (Umbellatum)—15L13—Blazing cardinal-scarlet. 4 to 5 inch blooming size, 50c each; 3 for \$1.25.

ESTATE—15L14—Mammoth snow-white Easter lily. Select 7 to 8 inch size, 65c each; 3 for \$1.80.

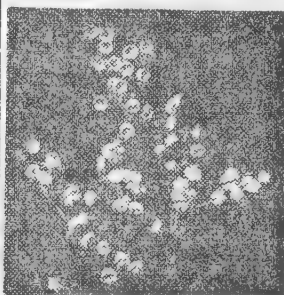
ORANGE TRIUMPH—15L15—Big, fiery-orange. 7 to 8 inch blooming size, 65c each; 3 for \$1.75.

DREAM LILY (Phillippeneuse)—15L16—Long, snow-white blooms. 4 to 5 inch blooming size, 50c each 3 for \$1.35.



FAMOUS REGAL LILY 15L17—The best known and most popular lily of all. Easy to grow and sure to bloom. The beautiful blooms are white flushed with pink, with creamy-golden throats. The delightful perfume of this lovely lily pervades the garden in mid-season when scent and profusion of bloom are most important. 5 to 6 inch bulbs, 2 for 50c; 6 for \$1.40; 12 for \$2.50. 6 to 8 inch bulbs, 2 for 65c; 6 for \$1.75; 12 for \$3.10.

**2 for 50c
6 for \$1.40**



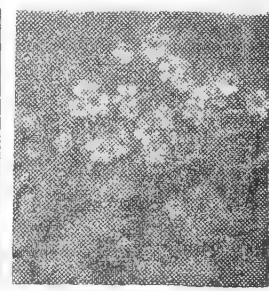
Lilies Of The Valley

15L18—Lovely, fragrant, creamy-white bells on 6 inch stems. Easy to force indoors, and hardy outdoors. Grow best planted in shady locations. For indoor forcing use light soil. Excellent for indoors. 3 for 49c; 6 for 78c; 12 for \$1.30; 25 for \$2.45.



Sacred Tiger Lily

15L19—Striking in its beauty. Mixed rainbow colors. The large, gorgeously marked blooms appear each day for many weeks throughout the summer. Sacred to Aztec sun worshippers. Easy to grow; bulbs multiply and require same care as gladioli. 3 for 50c; 6 for 98c; 12 for \$1.75.



American Shamrocks

(Oxalis)—**15B20**—Continuous flowering, each bulb producing a tremendous number of lovely bright pink flowers from early summer until winter. Attractive four-leaf clover like foliage. Not winter hardy, care for same as gladiolus bulbs. Pot for blooms indoors. No. 1 bulbs, 3 for 30c; 6 for 49c; 12 for 85c.

HARDY, GIANT, DOUBLE FLOWERING PEONIES

PRIMEVERE—15P21—Famous yellow peony. \$1.35 each; 3 for \$3.75.

MISS ECKHART—15P22—Big, double, clear, bright pink. 95c each; 3 for \$2.55.

FESTIVA MAXIMA—15P23—Reliable, double, white. 85c each; 3 for \$2.25.

KARL ROSENFELD—15P24—Big, velvety-crimson. 85c each; 3 for \$2.25.

SARAH BERNHARDT—15P25—Immense, double apple blossom pink. 95c each; 3 for \$2.55.

BARONESS SCHROEDER—15P26—Huge, double, white. Recommended. \$1.15 each; 3 for \$2.95.

MONS. MARTIN CAHAZAC—15P27—Nearest black, crimson-maroon. \$1.50 each 3 for \$4.25.

Save! Order Peonies By Color!

15P28—Guaranteed to be early blooming, large, double varieties. Thrifty, young, 3 to 5 eye prize winning varieties. Choice of red, white or pink alike or assorted. A certified \$2.75 value—save 20%. 75¢ each; 3 for \$1.99.

**3 for
\$1.99**

Large Flowering CANNAS

Large, decorative foliage and colorful continuous blooms all summer. Bulbs increase, dig each fall. Hand picked No. 1 jumbo 3 to 5 eye.

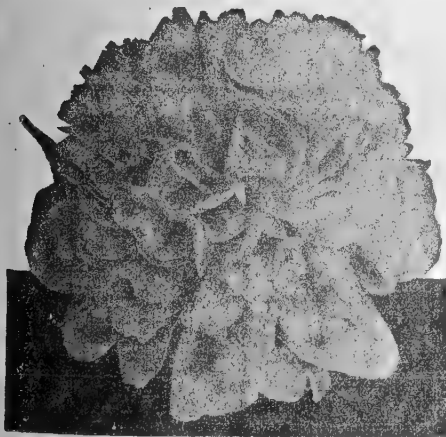
APRICOT—15C29—Apricot, overcast salmon. 26c each; 3 for 52c; 12 for \$1.70.

WYOMING—15C30—Fiery-orange; bronze foliage. 26c each; 3 for 52c; 12 for \$1.70.

PRESIDENT—15C31—Immense, fiery-scarlet blooms in profusion. 28c each; 3 for 63c; 12 for \$1.95.

RICHARD WALLACE—15C32—Pure yellow. 28c each; 3 for 63c; 12 for \$1.95.

CITY OF PORTLAND—15C33—Vivid pink. 27c each; 3 for 55c; 12 for \$1.80.



PRESIDENT SCARLET CANNA BED—15C34

A grand display of fiery-red flowers all summer. Without exception The President is the best red canna. No. 1 roots, 12 for \$1.95; 24 for \$3.60; 48 for \$6.75.

SPECIAL OFFER OF CANNAS

All 5 unlabeled for 89¢

15C35—One each of the five varieties listed. President, City of Portland, Richard Wallace, Wyoming and Apricot. No. 1 roots, 5 for 89¢.

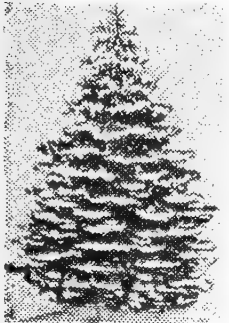




SALE SPRINGHILL'S SENSATIONAL EXTRA VALUE PAGE



1¢ Buys an Extra Article



BLUE SPRUCE
(Picea Pungens Glauca)—
16E1—Good blue spruce
are expensive and add to
the value of property. 4
years old, 5 to 7 inch
branched plants, 60¢
each.

SALE PRICE
2 for 61c



SHASTA DAISY
Conqueror

16P2—Immense snow-
white flowers with yellow
centers in great profu-
sion. Excellent long last-
ing bouquets. 2 yr. plants
30¢ each;

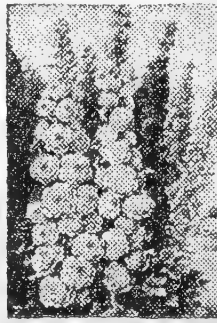
SALE PRICE
2 for 31c



SWEET SCENTED
TUBEROSE

16B3—(Double Pearl)—
Large, double flowers of
thick wax-like texture.
Rich, exotic fragrance,
strong stems, lovely white
color. Fine for charming
bouquets. Big 3 to 4
inch bulbs, 30¢ each;

SALE PRICE
2 for 31c



DOUBLE
HOLLYHOCKS

16P4—Most vivid-colored
hollyhocks hybridized and
improved for size, color,
shape of blooms. Disease
resistant strain, mixed
rainbow colors. 32¢ each;

SALE PRICE
2 for 33c



HARDY HIBISCUS

16P5—(Mallow Marvel)—
Largest blooming peren-
nial; pink, red, and white
pastel colors. Profusion
of flowers throughout the
summer months. 2 yr.,
29¢ each;

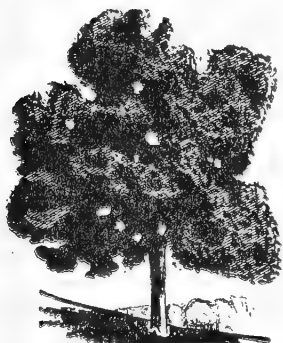
SALE PRICE
2 for 30c



SWEET WILLIAMS

16P6—(New hybrid
giants)—Select strain
imported direct from Hol-
land. Giant blooms, rain-
bow colors, for weeks
during May and June.
2nd year offered, amazing
beauty, 2 yr., 38¢ each;

SALE PRICE
2 for 39c



THORNLESS
HONEYLOCUST

16T7—(Gleditsia) Fast grow-
ing, disease resistant, clean
and beautiful shade tree. 4 to
5 ft. size, 98c each;

SALE PRICE
2 for 99c

Economy SHADE TREES BEST VARIETIES

Outclassing all competition in small, straight, healthy trees. Best varieties.



SENSATIONALLY LOW PRICES



SILVER MAPLE (Fastest growing maple) 3 ft. size, 50c each	16T10	SALE PRICE	2 for 51c
WEeping WILLOW (Fast growing weeping strain) 3 to 4 ft. size, 55c each	16T11	SALE PRICE	2 for 56c
LOMBARDY POPLAR (Tall, narrow growing) 2 to 3 ft. size, 35c each	16T12	SALE PRICE	2 for 36c
WHITE BIRCH (European white bark) 1 1/2 to 2 ft. size, 55c each	16T13	SALE PRICE	2 for 56c
CHINESE ELM (Rapid growing strain) 3 to 4 ft. size, 45c each	16T14	SALE PRICE	2 for 46c
NORWAY MAPLE (Fine avenue tree) 4 to 5 ft. size, \$2.50 each	16T15	SALE PRICE	2 for \$2.51
DOGWOOD (White flowering cornus florida) 1 to 1 1/2 ft. size, 50c each	16T16	SALE PRICE	2 for 51c
SILVER MAPLE (Fastest growing maple) 5 to 7 ft. size, \$1.95 each	16T17	SALE PRICE	2 for \$1.96
SYCAMORE (Sturdy trees grow fast) 3 to 4 ft. size, 50c each	16T18	SALE PRICE	2 for 51c
SUGAR MAPLE (The famous hard maple) 3 to 4 ft. size, 60c each	16T19	SALE PRICE	2 for 61c



HARDY MARGUERITE

16T8—Extremely hardy plants that
spread, can be divided. Big, clean,
bright yellow flowers throughout
the summer. 2 yr., 36¢ each;

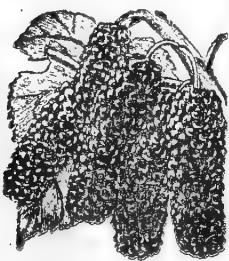
SALE PRICE
2 for 37c



CHINESE
CHESTNUTS

16T9—Large,
sweet chest-
nuts, lowest
prices offered,
1 to 1 1/2 ft.
size, 98¢ ea.

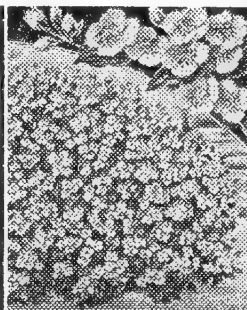
SALE PRICE
2 for 99c



IMPROVED RUSSIAN
MULBERRY

16T20—Excellent, hardy
ornamental fruit bearing
tree. Fruit for several
weeks, fine for jams, pies,
eating and bird food. 3
yr., 3 to 4 ft. size, 60¢
each;

SALE PRICE
2 for 61c



FRAGRANT
MOCK ORANGE

16S21—(Philadelphus
Cornarius) Lovely pearly-
white blooms of intense
and delightful fragrance
for weeks each spring.
Hardy, grows 10 ft. tall.
Big, 2 ft. plants, 40¢
each;

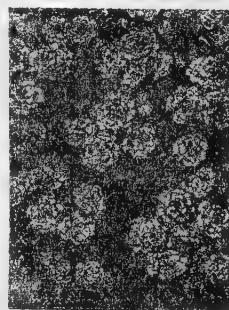
SALE PRICE
2 for 41c



FLAME CARNATION

16P22—(Double Scarlet
Grenadin) Reselected cut
flower, everblooming
strain. Blooms profusely
throughout the summer
and fall. Select field
grown plants, 48¢ each;

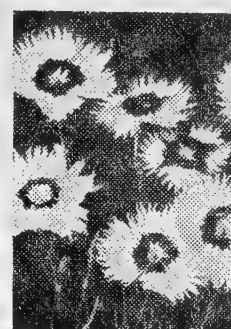
SALE PRICE
2 for 49c



DOUBLE RED
ROSE OF SHARON

16S23—(Althae) Beauti-
ful, double red blooms
fill the plants for several
weeks each fall. Rare and
unusual double red vari-
ety. Sensationally priced,
2 yr. heavy 2 ft. size,
48¢ each;

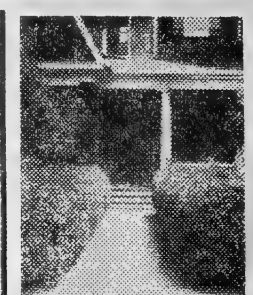
SALE PRICE
2 for 49c



GARDEN PINKS

16P24—New, dwarf, semi-
double blooms in great
profusion throughout the
spring. Exquisite frag-
rance, silvery-blue foliage,
2 yr. size, 27¢ each;

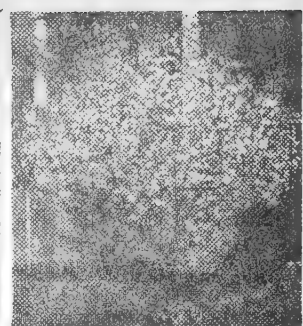
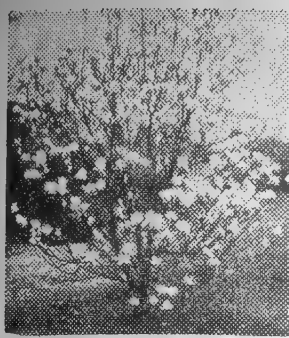
SALE PRICE
2 for 28c



HARDEST PRIVET

(Amur River Privet)—
16H25—One of the most
beautiful, fast growing
hedges. Clip to desired
height and shape. Excel-
lent field grown plants,
1 ft. size, Sale price,
2 yr. for 16¢;

SPECIAL
50 for \$3.25



MAGNOLIA SOULANGEANA

17T1—In spring trees are completely covered with immense blooms of rosy-pink inside and reddish-purple outside. One plant will dominate the neighborhood. Bare root size, 1 ft., \$1.25 each; 1½ to 2 ft., \$1.75 each. Flowering plants, B&B 3 ft. size, \$7.50 each; 5 ft. size, \$10.50.

TREE HYDRANGEA

17T2—(Giant Flowering Pink P. G.)—17T2—The massive flowers open snow-white and change with age to rosy-pink. Plants grow 12 ft. tall and are filled with blooms in August and September. 3 ft. size, \$1.50 each. 4 ft. size, \$2.25 each.

CRIMSON FLOWERING PEACH

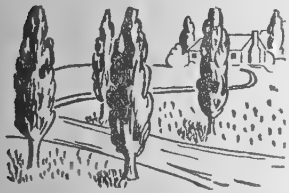
17T3—(Giant, double, red)—Profusely laden with large, brilliant, blood-red blooms which have a rich crimson sheen. Excellent cut for bouquets. The trees look like a huge bouquet and are magnificent. 3 ft. size, 85¢ each; 3 for \$2.25. 4 to 5 ft. blooming size, \$1.50 each.

WHITE FLOWERING DOGWOOD

17T4—(Cornus Florida)—A fine native, small tree of great beauty, charm and popularity. Extremely hardy, sturdy and free flowering in spring when the trees are a magnificent sight. 2 ft. size, 50¢ each; 3 for \$1.25. 3 ft., \$1.35 each.

CRIMSON FLOWERING CRAB

17T5—(Malus Eleyi)—In spring the trees are hidden by the abundance of red blooms. Compact, dwarf trees with frosty-red foliage on tips and bright red in fall. 4 ft. size, \$1.45 each; 3 for \$4.00. 5 ft. size, \$2.35 each; 3 for \$6.75.



LOMBARDY POPLAR

17T6—A stately, tall, narrow tree of rapid growth with glossy leaves that shimmer in the sunlight. Excellent along driveways, as tall screens or hedges. Big, 8 to 10 ft. size, \$1.45 each; 3 for \$3.75; 6 for \$7.00. 3 to 4 ft. size, 3 for 75¢; 6 for \$1.35; 10 for \$1.98. 2 to 3 ft. size see 1c sale opposite.

RED LEAF PLUM—17T8—(Prunus Cistena)—Its foliage is a deep shade of crimson-purple and is a great attraction throughout the summer. Compact, dwarf trees (8 to 10 ft.) have lovely pink blooms in spring. 2 ft. size, \$1.25 each; 3 for \$3.45. 4 ft. size, \$2.15 each; 3 for \$6.25.

RED BUD—17T9—(Cercis Canadensis)—Brilliant flowering native trees. Colorful in spring. Every branch and twig covered with thousands of bright, purplish-red blooms. Beautiful, big, round leaves. Symmetrical plants grow about 20 ft. tall. 2 ft. plants, 45¢ each; 3 for \$1.15. Big, 5 ft. size, \$1.50 each; 3 for \$4.25.

WEeping WILLOW—17T10—(Salix Pendula)—One of the fastest growing ornamental trees that really weeps. Beautiful compact specimen plants in 3 or 4 years from Spring Hill's select strain. 3 ft. size, see 1c sale opposite. 5 ft. size, \$1.49 each; 2 for \$2.75. 8 ft. size, \$2.25 each; 10 ft. size, \$3.25 each.

CHINESE ELM—17T11—(Ulmus Pumila)—Grows so rapidly that in a few years you have shade. Thrives in most all soils and locations. Hardy, northern, fast growing strain that makes dense, regular-shaped trees of great beauty. 5 to 7 ft., \$1.15 each; 2 for \$1.98. 6 to 8 ft., \$1.85 each; 2 for \$3.50. 8 to 10 ft., \$2.85 each; 2 for \$5.50.

SILVER MAPLE—17T13—(Acer Saccharinum)—The fastest growing maple and one of the most beautiful. Nice silvery-green foliage that changes to brilliant autumn shades of scarlet and gold. Recommended for quick shade. Easy to grow, very satisfactory. 6 to 8 ft., 2 for \$3.50. 8 to 10 ft., \$2.85 each; 2 for \$5.50.

EUROPEAN MT. ASH—17T14—(Sorbus)—The most free blooming and fruiting variety. Creamy-white flat flower clusters in spring followed by immense clusters of bright orange-scarlet berries. Small trees (20 to 25 ft.) with good, rich green, crispy looking foliage. 3 to 4 ft. size, 75¢ each; 3 for \$1.95. 5 ft. size, \$2.85 each.



RED LEAF NORWAY MAPLE

17T7 — (Schwedleri) New leaves in spring are a bright crimson-purple and gradually change to greenish-maroon in summer with bright autumn foliage. Trees of commanding appearance that grows 30 ft. tall. 5 ft. size, \$2.65 each; 2 for \$4.98. 7 to 8 ft. size, \$3.85 each; 2 for \$7.40.

Best Hardy HEDGES PLANT LIVING FENCES for ECONOMY and BEAUTY

AMUR RIVER NORTH PRIVET

(The hardiest privet hedge)—17H16—The hardiest of all hedge plants. Beautiful upright growth and makes a compact hedge. 1 ft. size see 1c sale opposite page.

15-18" 10 for \$1.40, 25 for \$2.75, 100 for \$ 9.75
18-24" 10 for \$2.20, 25 for \$4.50, 100 for \$16.00
2-3' 10 for \$2.95, 25 for \$6.25, 100 for \$22.50

CALIFORNIA PRIVET

(Most popular privet hedge)—17H17—Most popular privet, famous for beautiful foliage, rapid growth.

9-12" 10 for \$.85, 25 for \$1.50, 100 for \$ 5.00
18-24" 10 for \$1.75, 25 for \$3.60, 100 for \$12.75

NEW IBOLIUM PRIVET

(Most beautiful, hardy privet)—17H18 — Ibolium has the glossy foliage of California, with hardness of Amur River.

9-12" 10 for \$1.10, 25 for \$2.00, 100 for \$ 6.50
12-18" 10 for \$1.50, 25 for \$3.00, 100 for \$10.50
2-3' 10 for \$3.25, 25 for \$6.75, 100 for \$25.00

BARBERRY GREENLEAF

(Thunbergi)—17H19—Best protective and berried hedge. Lovely autumn coloring fruits all winter. Succeeds well in all soils and climates.

9-12" 10 for \$1.25, 25 for \$2.50, 100 for \$ 9.00
12-18" 10 for \$1.80, 25 for \$3.75, 100 for \$13.00
18-24" 10 for \$2.75, 25 for \$5.75, 100 for \$21.00

RED LEAVED BARBERRY

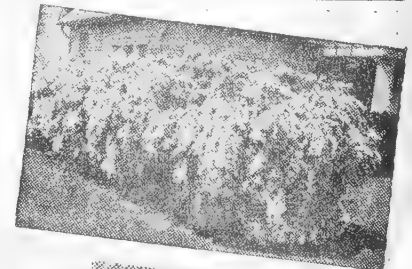
17H20—Bright red foliage in spring and summer, dark crimson in the fall.

9-12" 10 for \$1.95, 25 for \$4.25, 100 for \$16.00
12-18" 10 for \$2.60, 25 for \$5.75, 100 for \$22.00
18-24" 10 for \$3.50, 25 for \$7.85, 100 for \$30.00

SPIREA VAN HOUTTEI

(Bridal Wreath)—17H21—World's most universal flowering shrub. Plants are a mass of white in bloom. Easy to grow, does well in sun or shade.

9-12" 10 for \$1.10, 25 for \$2.00, 100 for \$ 6.75
12-18" 10 for \$1.60, 25 for \$3.25, 100 for \$11.50
18-24" 10 for \$2.25, 25 for \$5.00, 100 for \$18.50



A practical living farm fence
ROSA MULTIFLORA
see page 2



**PRIZE WINNING
EVERBLOOMING**

PATENTED ROSES

Patented roses are new varieties with outstanding merit that have been granted patent rights. This gives the originator protection and encourages him to continue his research. The ten patented roses listed are all fully double blooming hybrid tea roses that will bloom profusely in your garden this summer.

ROSE OF FREEDOM 18R1—(Plant Pat. No. 791)—Brilliant currant-red, sweetly fragrant blooms. 1st prize winner. **\$1.50 each; 3 for \$3.75; 12 for \$15.00.**

TALLYHO 18R2—(Plant Pat. No. 828)—Lovely phlox-pink superbly blended with cardinal red. **\$2.00 each; 3 for \$5.00; 12 for \$20.00.**

CHARLOTTE ARMSTRONG 18R3—(Plant Pat. No. 455)—Considered one of the finest roses in existence. Brilliant cerise. **\$1.50 each; 3 for \$3.75; 12 for \$15.00.**

TAFFETA 18R4—(Plant Pat. No. 716)—Begonia-rose-salmon and gold, intriguing color harmony. **\$1.50 each; 3 for \$3.75; 12 for \$15.00.**

SUTTER'S GOLD 18R5—(Plant Pat. applied for)—All American rose selection of 1950. Buttercup-yellow steeped in coral. **\$2.50 each; 3 for \$6.30; 12 for \$25.00.**

CAPISTRANO 18R6—(Plant Pat. applied for)—All American rose selection for 1950. Brilliant rose-pink of enormous size. **\$2.50 each; 3 for \$6.30; 12 for \$25.00.**

FORTY NINER 18R7—(Plant Pat. No. 792)—Most brilliant of all bi-color; rich chrome-yellow outside, vivid red inside. **\$2.00 each; 3 for \$5.10; 12 for \$20.00.**

PEACE 18R8—(Plant Pat. No. 591)—America's most popular rose. Immense yellow blooms edged pink. **\$2.00 each; 3 for \$5.00; 12 for \$20.00.**

LOWELL THOMAS 18R9—(Plant Pat. No. 595)—Vibrant clear yellow buds beautifully shaped; open big, double blooms. **\$1.50 each; 3 for \$3.75; 12 for \$15.00.**

CRIMSON GLORY 18R10—(Plant Pat. No. 105)—World's most popular red rose. Winner of most all awards. Recommended. **\$1.50 each; 3 for \$3.75; 12 for \$15.00.**

All State Everblooming HYBRID TEA ROSES

Feature Your Garden With These Outstanding Roses

All will bloom for you this summer and provide continuous blooms for bouquets and garden color. Excellent varieties that are exceptionally hardy, disease-resistant, vigorous-growing, and free-blooming, with large, double flowers.

McGREDDY'S YELLOW 18R11—Bright buttercup-yellow.

CHRISTOPHER STONE 78R12—Striking vivid crimson.

EDITH NELLIE PERKINS 18R13—Cerise, orange, pink and gold.

McGREDDY'S IVORY 18R14—Huge, creamy-white.

PRES. H. HOOVER 18R15—Flame-scarlet, gold and pink.

SISTER THERESE 18R16—Big, chrome-yellow.

GRENOBLE 18R17—Velvety scarlet-red.

THE DOCTOR 18R18—Big, silvery-pink.

KONIGAN LOUISE 18R19—Crispy white flowers.

CONDESA DE SASTAGO 18R20—Vivid gold, scarlet and orange.

Choice of above 10 all state everblooming roses. Giant, 2 yr., No. 1, \$1.10 each; 3 for \$2.95; 6 for \$5.65; 12 for \$10.75.

**SPRING HILL'S
ROSE GARDEN
SPECIAL**



Accepted from coast to coast for their gorgeous colors, delightful fragrance and profusion of blooms all season. Plant these sturdy, dependable varieties for a big supply of beautiful cut-flowers and continuous blooms in your garden this summer. We highly recommend these hi-quality roses offered at a big saving.

POINSETTIA 18R22—Dazzling crimson-scarlet.

TALISMAN 18R23—Orange, red and gold.

K. A. VICTORIA 18R24—Magnificent white.

EDITOR McFARLAND 18R25—Big, rose-pink.

GOLDEN DAWN 18R26—Beautiful, big, yellow.

ETOILE DE HOLLAND 18R27—Velvety crimson.

Big, 2 yr. No. 1 size guaranteed to bloom this summer, 79c each.

Collection No. 18R28—Garden of six, one each as listed above.

6 for \$3.75

Giant XX largest size. Guaranteed to bloom this summer. 98c each.

Collection No. 18R29—Garden of six, one each as listed above.

6 for \$4.95

All State Everblooming Hybrid Tea Rose Special

18R21—Garden of 10, one each of above described roses.

10 for \$9.00

EVERBLOOMING FLORIBUNDA ROSES

Gorgeous, large-flowered, cluster roses that bloom profusely all summer. Plant among shrubs and evergreens. Make colorful borders or hedges; especially nice when massed in groups. Also excellent for long-lasting floral arrangements. Use in place of common shrubs for color all summer; sturdy; healthy; hardy plants.

FAVORITE FLORIBUNDAS

ELSE POULSEN 19R1—Reliable and dependable variety with cheerful, bright rose-pink, semi-double blooms. Flowers continuously all season. Vigorous, erect-growing plants.

IMPROVED LAFAYETTE 19R2—Immense clusters of large, fragrant, vivid crimson blooms. A popular and favorite variety for many years. Upright plants grow 3 feet tall.

RED RIPPLES 19R3—New improved variety, our favorite. Magnificent, wavy-petaled flowers of intense red in masses and almost hide the plant. Tall, strong-growing, constantly in bloom.

FLORADORA 19R4—(AAR'S award 1945)—Spectacular for its brilliance and profusion of big, double camellia-like, cinnabar-red flowers. Vigorous grower and abundant bloomer.



Floradora

Choice of above 4 varieties floribundas:

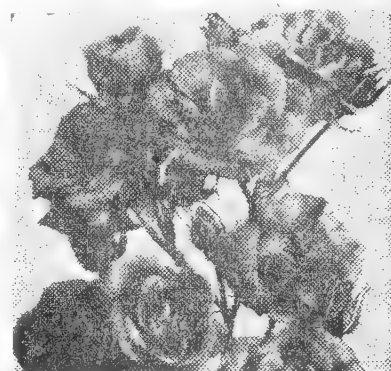
2 yr., No. 1½ 69c each; 3 for \$1.85; 10 for \$5.95.

2 yr., No. 1 90c each; 3 for \$2.50; 10 for \$7.95.

PATENTED FLORIBUNDAS

FASHION 19R5—(AAR'S winner 1950)—An entirely new rose—color of sparkling coral-pink, suffused with gold. Hardy, prolific, and vigorous with enticing "Old rose" fragrance. Enormous clusters of blooms persist without interruption from spring until winter. The blooms are long lasting, excellent for cutting. We have watched this rose for several years and recommend it. 2 yr., No. 1, \$2.00 each; 3 for \$5.00; 12 for \$20.00.

PINOCCHIO 19R6—(Plant Pat. No. 484)—Vigorous, hardy plants produce an abundance of pointed, salmon-gold buds that open to miniature, hybrid-tea like roses of soft, clear pink in great clusters. 2 yr. No. 1, \$1.25 each; 3 for \$3.15; 12 for \$12.50.



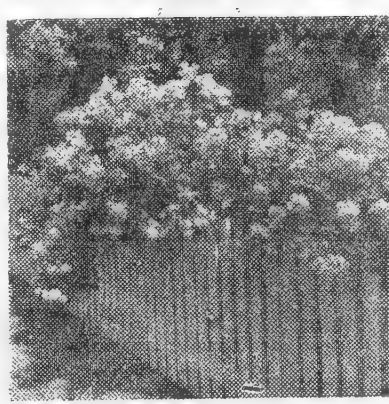
Red Ripples



Climbing Blaze



Climbing Dr. Nichols



Climbing Paul's Scarlet



Climbing Talisman

EVERBLOOMING CLIMBING ROSES

Plant these colorful climbers for array of gorgeous colors on porches, arbors or trailing over fences. Pleasing summer foliage and hundreds of big, double, long, strong-stemmed blooms this year for cutting throughout the summer.

CLIMBING P. S. DU PONT 19CR7—Beautiful, big, double, fragrant, rich, golden-yellow blooms throughout the summer.

CLIMBING TALISMAN 19CR8—Marvelous buds with lovely, big, double blooms of brilliant scarlet-orange and rich yellow.

CLIMBING ETOILE DE HOLLAND 19CR9—Some of the finest, big, red buds and brilliant double blooms we have ever seen.

Choice of above 3 everblooming climbing roses. 2 yr., No. 1, \$1.00 each; 3 for \$2.75. 2 yr. XX, giants, \$1.25 each; 3 for \$3.45.

EVERBLOOMING CLIMBING ROSE TRIO 19CR10

One each of the following everblooming, climbing roses. (Blooms all season) Big, No. 1 size, certified \$4.19 catalog value.

One each of
Cl. Blaze
Cl. P. S. DuPont
Cl. Talisman

All 3 for
\$3.59

CLIMBING BLAZE 19CR11—(Plant Pat. No. 10)—Most popular of all climbing roses. Dazzling in its brilliance, magnificent in its profusion of vivid, scarlet blooms. Tall, vigorous growing with healthy foliage, extremely winter hardy. 2 yr., No. 1, \$1.69 each; 3 for \$3.75.

CLIMBING J. H. NICHOLAS 19CR12—(Plant Pat. No. 457)—Immense, fully double, intensely fragrant, deep rose-pink blooms continuously from late spring until winter. The everblooming performance is amazing, the plants are vigorous, extremely hardy, healthy, and of medium height. The big, double, hybrid, tea-like blooms are often 5 to 6 inches across on long, heavy stems. No. 1 size, \$1.69 each; 3 for \$3.75.

Hardy, Fast Growing, Climbing Roses

Appreciated for their scores of fragrant, colorful flowers and pleasing summer foliage. Grow them on trellises, fences, walls, or any place where the garden picture needs accent or coverage of some architectural feature. All varieties listed make beautiful, long-lasting bouquets.

CLIMBING SILVER MOON 19CR13—Large; white flowers (4½ inches across) with golden centers and long, strong stems.

CLIMBING PRIMROSE 19CR14—Considered the best yellow climber. Big, fragrant, double blooms nearly cover the foliage.

CLIMBING DR. VAN FLEET 19CR15—Big, soft, shell-pink double blooms of exquisite beauty. A favorite and dependable, abundant blooming variety.

CLIMBING MARY WALLACE 19CR16—Extremely rugged and fast growing with massive, double, rose-pink blooms. Most colorful and dependable.

CLIMBING AMERICAN BEAUTY 19CR17—Beauty of foliage, good color and freedom of bloom hold this favorite in high esteem. Big; double, light crimson blooms.

Choice of above 5 climbing roses, 2 yr., No. 1, 90c each; 3 for \$2.50; 10 for \$7.95.

CLIMBING PAUL'S SCARLET ROSE

19CR18—Favorite, large flowering climbing rose. The parent of Blaze and winner of Gold Medal at the National Society's Exhibition. Striking brilliant scarlet color. Large, solitary, double blooms over a long period. Reduced prices. 2 yr. No. 2, 55c each; 3 for \$1.48. 2 yr. No. 1, 79c each; 3 for \$2.20. 3 yr. giants, XX, \$1.10 each; 3 for \$2.98.

SAVE
at these New
LOW PRICES

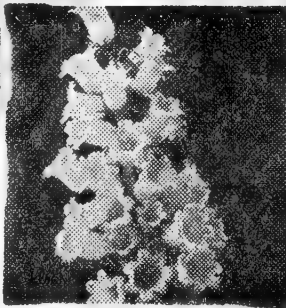
Beautiful Hardy Flowers

...GROW EACH
YEAR WITHOUT
REPLANTING



BLACKBERRY LILY

20P1—Unique orange gold lilies dotted scarlet and blackberry-like seeds, fine for winter bouquets. 2 yr., 35c each; 3 for 90c.



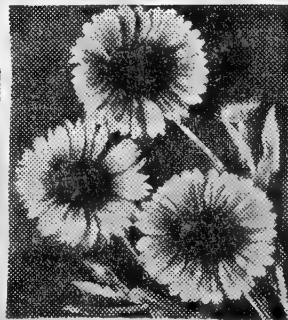
CANTERBURY BELLS

20P2—Unsurpassed for grace and beauty. Pink, white and blue cup and saucer-like flowers make lasting cut flowers. 2 yr., 25c each; 3 for 60c; 6 for \$1.05.



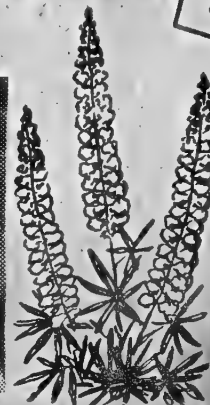
IRIS KAEMPFERI

20P3—New, aristocratic giants often as large as dinner plates. It blooms last and longest of the iris family. Assorted colors. 2 yr., 40c each; 3 for 99c; 12 for \$3.75.



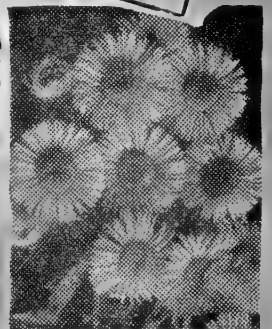
GAILLARDIA THE DAZZLER

20P4—Profusion of big, crimson-gold and orange flowers often 3 to 4 inches across. Blooms intermittently from June to November. 29c each; 3 for 75c; 6 for \$1.35.



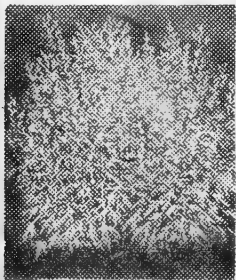
Famous Russel Lupines

20P5—Amazing colors, extra large flower spikes in greatest profusion. Big, 2 yr. blooming size plants. 33c each; 3 for 85c; 6 for \$1.55.



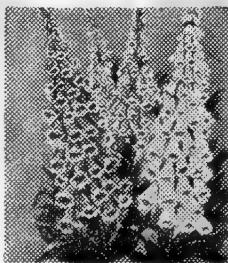
BLUE FRINGED DAISY

(Erigeron) — 20P6—Clusters of beautiful azure-blue flowers for several months each summer, fine for cutting. 33c each; 3 for 79c; 6 for \$1.50.



ARTMESIA SILVER KING

20P7—(Ghost Plant) — Sparkling silver-white foliage. Excellent for dried winter bouquets and mixed in summer bouquets. 28c each; 3 for 70c; 6 for \$1.25.



FOXGLOVE

(Digitalis)—20P8—Big, bell-shaped flowers on tall, stately stems throughout the summer. Finest hybrids in beautiful colors from pink, blue, violet to white. 2 yr., 29c each; 3 for 75c; 6 for \$1.35.

Beautiful Everblooming Carnations

New, giant, fragrant, everblooming greenhouse varieties. Big, fancy blooms equal in size and quality as those sold by florists. Dozens of blooms for cutting this summer from each plant. Semi-hardy, protect in winter.

CAMELLIA 20P9—Vivid rose-pink.

SHANGRI LA 20P10—Pure snow-white.

CARDINAL KING 20P11—Bright scarlet-red.

CRIMSON SPLENDOR 20P12—Glowing velvety-crimson.



Choice of above 4 carnations, 65c each; 3 for \$1.75.

CAMELLIA-FLOWERED CARNATION GARDEN—20P13
One each 4 varieties listed above (labeled), 4 for \$2.25.



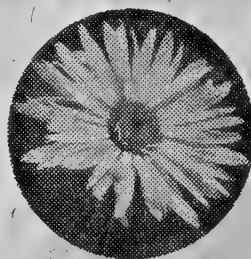
Sweet Lavender

20P14—(Lavendula Vera) —Delightful yet intensely fragrant; blue flowers and foliage throughout the summer. Highly valued for scenting linens, etc. 45c each; 3 for \$1.20.



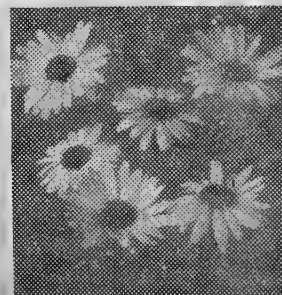
Imperial Hybrid Columbine

20P15—Beautiful, long spurs, amazing pastel colors. Large, tall, free flowering plants bloom from early to late spring. 2 yr., 28c each; 3 for 69c; 6 for \$1.25.



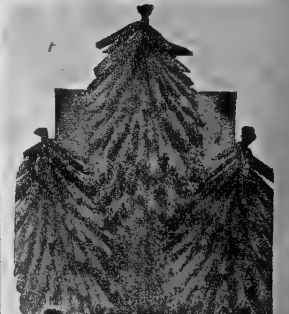
MAY QUEEN

(Shasta Daisy)—20P16—Earliest blooming, large, cut-flower variety. New, imported strain with hundreds of white blooms in May and June. 27c each; 3 for 65c; 6 for \$1.15.



PAINTED DAISIES

(Pyrethrum) — 20P17—Robinson giants. Improved size and brilliance of pink and red colors. Neat, dwarf plants, cut-leaf foliage. 2 yr. clumps, 27c each; 3 for 65c; 6 for \$1.15.



RED HOT POKER

20P18—(Tritoma Pfitzer) —Profusion of big, orange-scarlet blooms throughout the season. Pfitzer is the most dependable and colorful variety. 45c each; 3 for \$1.15.



DELPHINIUM

AT A
BIG
SAVING

PACIFIC HYBRID'S 21P1—Considered the finest hybrid in existence. Magnificent, tall, long lasting exhibition flower spikes of harmonious colors of blue, violet and lavender. 37c each; 3 for 98c.

SUPERB HYBRID'S 21P2—Excellent, hardy, disease resistant, giant flowering strain of assorted colors. Plants bloom 2 to 5 times a season. Unsurpassed for huge size, lovely colors and strong stems for cutting. 2 yr., 35c each; 3 for 89c; 6 for \$1.65.

BELLADONNA 21P3—Plants are easier to grow, hardier and produce more blooms than the popular hybrids. Low growing (3 to 4 ft.) especially nice for bouquets. 29c each; 3 for 75c; 12 for \$2.65.

BELLAMOSA 21P4—Identical in every way to Belladonna except the blooms are a deep rich blue. 29c each; 3 for 75c; 12 for \$2.65.

Cut Flower Delphinium Garden, 21P5

2 Belladonna, 2 Bellamosa. 4 for 89c.

ASTILBE

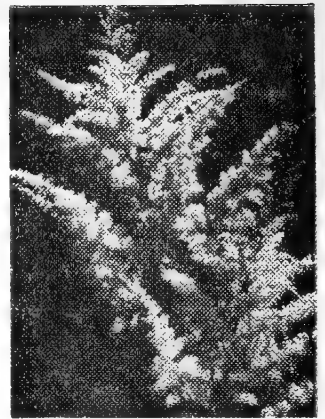
Perennial
Spirea

Exquisite large, graceful, plummy flowers through June and July, for long lasting bouquets. New reduced prices.

FANAL—21P6—Fiery-crimson.

PEACH BLOSSOM—21P7—Brilliant pink.

GLADSTONE—21P8—Snow-white.

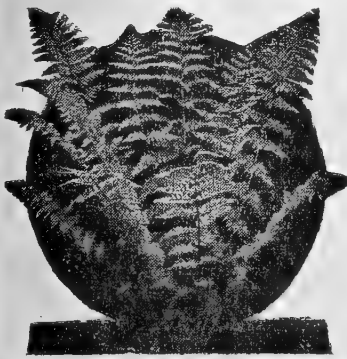


2 yr. clumps,

48c each;

3 for \$1.30; 12 for \$4.75.

BEST OUTDOOR FERNS



Hardy plants with large decorative foliage for bouquets and garden beauty. Plant 10 inches apart in moist, sandy location. All plants big 3 yr. clumps.

OSTRICH—21P9—Graceful, tall growing. 36c each; 3 for 95c; 6 for \$1.69; 12 for \$3.15.

CINNAMON—21P10—Strikingly handsome. 38c each; 3 for \$1.00; 6 for \$1.79; 12 for \$3.35.

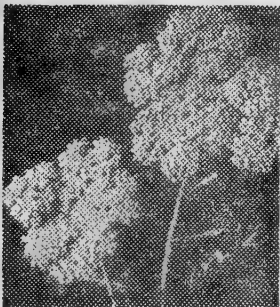
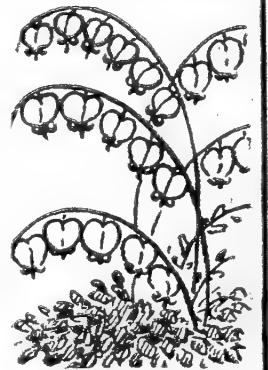
ROYAL—21P11—Glossy, deep green foliage. 38c each; 3 for \$1.00; 6 for \$1.79; 12 for \$3.35.

OLD FASHIONED BLEEDING HEART

21P22—(Dicentra Spectabilis)—A favorite variety. Tall growing with large, graceful blooms. 69c each; 3 for \$1.89; 6 for \$3.60.

EVERBLOOMING PLUMY BLEEDING HEART

21P13—(Dicentra Exima)—Lovely, fine-cut foliage on dwarf plants contrast beautifully with blooms all summer. 50c each; 3 for \$1.35; 6 for \$2.50.



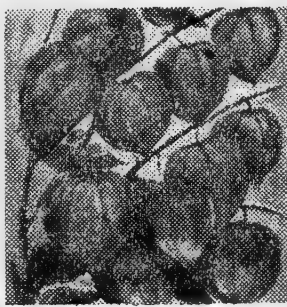
GIANT YELLOW YARROW

21P14—(Achillea Filipendula) Big blooms of brilliant yellow, finely cut foliage. Dried blooms fine for winter decorations. 2 yr., 27c each; 3 for 65c; 6 for \$1.15.



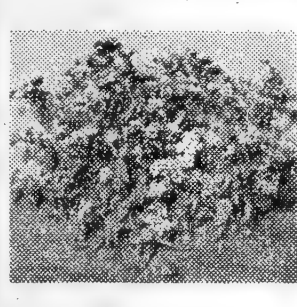
Pink Shasta Daisy

(Clara Curtis)—**21P15**—Lovely, clear, salmon-pink flowers from early August through September in great profusion. Hardy, easy to grow. 33c each; 3 for 79c; 6 for \$1.50.



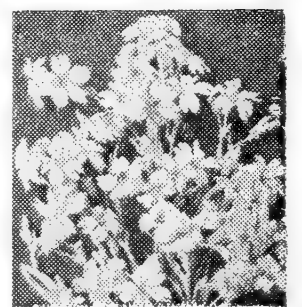
Chinese Lanterns

(Winter Cherry Physalis) — **21P16**—Bright orange-scarlet blooms 1st year. Excellent dried for winter decorations and beautiful in your fall garden. 25c each; 3 for 60c; 12 for \$2.10.



Hardy Ageratum

21P17—Splendid misty, Eleanor blue blooms in flat clusters 2 to 3 inches across. Strong, straight 18 inch stems. Wonderful for bouquets. 27c each; 3 for 65c; 6 for \$1.15.



Baskets of Gold

(Alyssum) — **21P18**—Early flowering, hardy, dwarf perennial with silvery foliage that is completely covered with clusters of golden blooms. 27c each; 3 for 65c; 6 for \$1.15.

SWEET VIOLETS

Hardy, easy to grow; intensely fragrant beloved flowers. Useful for decorations, corsages, etc. Improved, large flowering varieties.

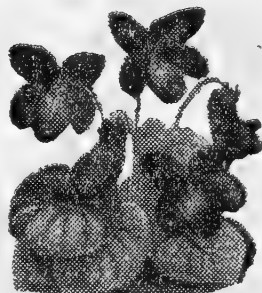
WHITE CZAR—21P19—Large, pure white, 45c each; 3 for \$1.20.

ROYAL ROBE—21P20—Lustrous violet-blue, 50c each; 3 for \$1.35.

PRINCE OF WALES—21P21—Deep purple, 55c each. Sale price, 2 for 56c.

SWEET SCENTED VIOLET GARDEN—21P22

One each blue, white and purple (No broken collections) 3 for \$1.00



PLATYCODON

Big balloon-shaped buds open into beautiful stars. Flowers for many weeks.

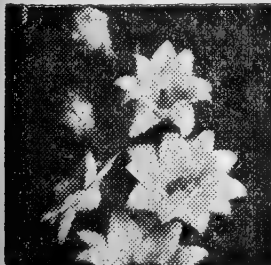
PLATYCODON GARDEN SPECIAL—21P27 One each 4 varieties listed above. Regular catalog value \$1.61. All 4 for \$1.25.

GRANDIFLORUM BLUE—21P23—29c each; 3 for 75c.

SHELL PINK—21P24—35c each; 3 for 90c.

DOUBLE BLUE—21P25—42c each; 3 for \$1.10.

DOUBLE WHITE—21P26—55c each; 3 for \$1.50.



BABY'S BREATH

Gypsophila—Remarkable profusion of delicate, small white or pink blooms in misty sprays. Highly prized for bouquets. Easy to grow, winter hardy plants.

PANICULATA—21P28—Single white, 24c each; 3 for 59c.

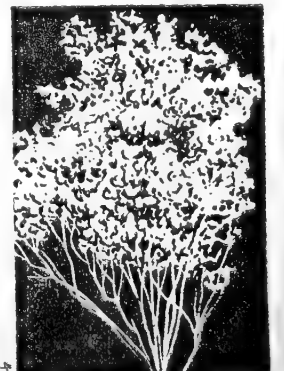
BRISTOL FAIRY—21P29—Grafted double white, 59c each; 3 for \$1.65.

ROSY VEIL—21P30—Grafted, double pink, 50c each; 3 for \$1.35.

OLDHAMIANA—21P31—Single pink, 35c each; 3 for 90c.

BABY'S BREATH SPECIAL 21P32

1 each Paniculata, Bristol Fairy, Rosy Veil, Oldhamiana. Certified catalog value \$1.68. One each all four varieties (Unlabeled) 4 for \$1.29.



Exhibition CHRYSANTHEMUMS

CHOICE
LARGE
HARDY



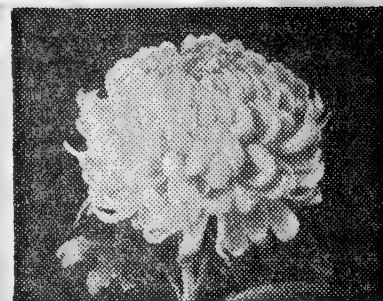
SURPRISE CHRYSANTHEMUMS COLOR COLLECTION

22C1—Here at Tipp City we produce over a half million chrysanthemums each year. Hundreds of the best, new varieties, acres of plants, millions of blooms. We offer only the better recommended, cut-flower varieties. All are guaranteed hardy, large, double, early and profuse blooming. One each of the following colors, 5 for \$1.15. All big, sturdy, pot plants that will bloom this fall.

- Exhibition red. ● Exhibition yellow.
- Exhibition white. ● Exhibition bronze.
- Exhibition pink.

Gentlemen:
Received my order of mums and all are doing fine. Cushion mums I ordered a year ago were lovely this fall.

Mrs. Chas. Drois
Washington C. H., Ohio



LARGE EXHIBITION HARDY CHRYSANTHEMUMS

Finest outdoor, hardy, giant flowering, cut-flower varieties. For many years Spring Hill has grown all the better, new introductions. The following are the most popular and in our opinion and experience the cream of several hundred varieties we grow.

- BETTY—22C2**—Lovely salmon-pink. 45c each; 3 for \$1.20.
ANN—22C3—Immense, double white. 50c each; 3 for \$1.35.
MARGIE—22C4—New, dark red. 45c each; 3 for \$1.20.
YELLOW AVALANCHE—22C5—Golden-yellow. 50c each; 3 for \$1.35.
CARNIVAL—22C6—Our favorite, fiery-orange. 55c each; 3 for \$1.45.

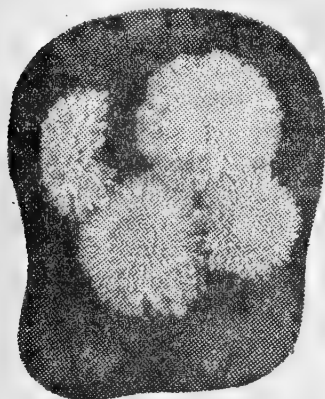
COLLECTION 22C7—Large, exhibition flowering chrysanthemums includes one of each of above five varieties. (labeled).
5 for \$1.95

- LAVENDER LADY—22C8**—Lavender.
AVALANCHE—22C9—Favorite white.
CHIPPEWA—22C10—Big, purple.
RED VELVET—22C11—Big, red.
OLIVE LONGLAND—22C12—Orange-gold-salmon.
EARLY WONDER—22C35—Peach-pink.
GOLDOCKS—22C13—Intense yellow.
 Above 7 hardy chrysanthemums, 36c each; 3 for 95c.

COLLECTION 22C14—Garden of 7, one each of above, not labeled at this special low price.
7 for \$1.89

Guaranteed Plants. Buy with Confidence
SPRING HILL NURSERIES
 TIPP CITY, OHIO

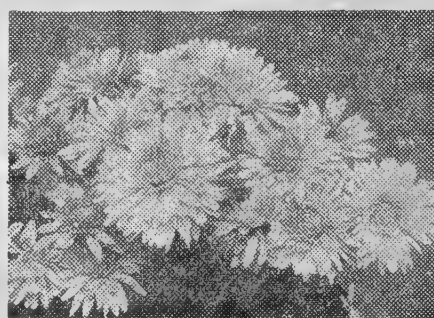
UNIVERSITY OF CHICAGO HARDY CHRYSANTHEMUMS



Choice, exhibition, hardy hybrids introduced by Dr. Kraus, one of America's master plant breeders. All plants are dependable, large, double, early blooming, free flowering, of vigorous growth and good foliage. Strong 2 inch pot plants bloom for you through September, October and November.

- CHAS. NYE—22C15**—Bright butter-cup yellow. 45c each; 3 for \$1.20.
COURAGEOUS—22C16—Brilliant crimson-red. 50c each; 3 for \$1.35.
CANDLELIGHT—22C17—Large, white blooms, cream centers. 42c each; 3 for \$1.10.
BARBARA SMALL—22C18—Pink with lilac cast, carmine centers. 45c each; 3 for \$1.20.
MURMURS—22C19—Big, double, aster-purple blooms. 50c each; 3 for \$1.35.
TANGERINE—22C20—Brilliant Spanish orange. Recommended. 47c each; 3 for \$1.25.

COLLECTION 22C21—University of Chicago flowering mum garden includes one each of above six varieties. (labeled)
6 for \$2.30



University of Minnesota CHRYSANTHEMUMS

All are extra early flowering, winter hardy, double blooming varieties hybridized by Dr. Longley. The following are some of the best mums grown. All are popular with visitors to the nursery. All are low-growing and compact plants but tall enough for making bouquets.

- MAROON 'N' GOLD—22C22**—Flaming copper. 55c each; 3 for \$1.50.
GLACIER—22C23—Double, white. 42c each; 3 for \$1.15.
BUTTERBALL—22C24—Big, yellow flowers. 45c each; 3 for \$1.20.
VIOLET—22C25—Rich, royal purple. 50c each; 3 for \$1.35.
DARK RED GOLD—22C26—Intense crimson. 42c each; 3 for \$1.15.
DR. LONGLEY—22C27—Double, pink. 65c each.

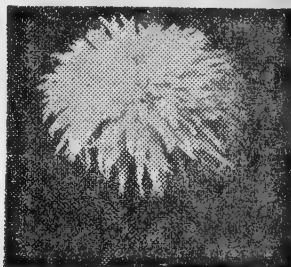
COLLECTION 22C28—University of Minnesota Mum Garden. One each of 6 varieties above (labeled).
6 for \$2.65

RA-PID-GRO

22PF23—Contains vital food elements plus vitamins. This concentrated plant food works miracles with your garden. 100% usable by plants (no inert matter). One pound of Ra-Pid-Gro makes 176 lbs. of liquid fertilizer. Dissolve at the rate of 1 lb. per 22 gallons of water, one or more teaspoonful to a quart of water. Used by most commercial nurserymen.

Prices

1 lb. \$1.25 5 lbs. \$4.50
 2 lbs. \$2.35 10 lbs. \$8.75
 25 lbs. \$21.00



QUILLED CHRYSANTHEMUMS

Long, rolled, pointed petals on big, double blooms that resemble giant, cactus-dahlia flowers, often 5 inches in diameter. All profuse flowering and striking colors.

- CACTUS GOLD—22C30**—Lovely, soft yellow blooms.
CAPT. JOHN SMITH—22C31—Glowing rose-pink.
DAHLIA MUM—22C32—Early, mulberry-red.
CACTUS WHITE—22C33—Lovely, large, white blooms.

Choice of above 4 quilled chrysanthemums 45c each; 2 for 80c.

COLLECTION 22C34—Garden of 4 as listed (labeled) 4 for \$1.55.

Our terms are cash with order. Money should be sent by check, postal money order, express money order, draft, or registered mail. No C.O.D. orders because of our lack of experienced office help. Sorry. WAR STAMPS ACCEPTED: Mail War Stamps in payment for your plant order from Spring Hill. In this way Uncle Sam will have the money; YOU HAVE the plants; Spring Hill will purchase the GOVERNMENT BONDS. Spend your money where it will do the most good.

IMPORTANT—Please use separate sheet of paper for all correspondence and questions requiring an answer, with your name and address to insure a prompt reply.

You will be doing your friends and Spring Hill a favor if you write the names and addresses of anyone who would be interested in receiving a copy of this catalog. Thank you.

REMITTANCE

FOLD ON THIS LINE

ORDERS ACKNOWLEDGED We acknowledge
 all orders by postal card when received. When we ship your order, your original order sheet will be returned to you with the merchandise ordered, for checking. **IN EVENT OF ANY ERROR, CLAIM OR ADJUSTMENT** it will be necessary for you to return your original order with your letter. If your order is not filled completely you will be advised whether or not balance will follow later or amount of any shortage refunded to you. Remember we will be unable to correspond with you about an order shipped without having your original order returned to us.

IMPORTANT—PLEASE ADD 10% FOR PACKING AND TRANSPORTATION ON ALL ORDERS.

If you do not include postage your order will be shipped by express collect or we will bill you for the postage.

Most orders can best be shipped by parcel post if not too large for the Mail.

Ohio customers please add 3% Ohio Sales Tax.

FOLD ON THIS LINE

Horticulture Specialists and Consultants

SPRING HILL NURSERIES

TIPP CITY, OHIO
 (MIAMI COUNTY)

USE
 LETTER
 POSTAGE
 HERE

From _____

Street _____

City _____

State _____

We Guarantee our nursery stock to be exactly as represented—highest quality—government inspected and to arrive in good growing condition. Any plants found otherwise upon arrival will be replaced FREE. Spring Hill's quality plants will grow, bloom, and produce if given—intelligent handling—proper planting and reasonable care.

REPLACEMENTS—Weather conditions—carelessness—lack of experience by planter—are conditions beyond our control; nevertheless Spring Hill agrees to replace at one-half the original purchase price any plants which fail to grow if notice is made one month after delivery of your order. Our liability cannot be greater than original purchase price. Please report unsatisfactory merchandise as soon as possible. It is our sincere desire to please. **SATISFACTION GUARANTEED.**

HONEST
 RELIABLE

Spring Hill's Guarantee

TO YOU A
 SAFE GUARD

FOLD ON THIS LINE

OUR POLICY — EVERY CUSTOMER MUST BE SATISFIED

GET

THE WORLD'S LARGEST AND MOST INFLUENTIAL FARM MAGAZINE

NOW!

Owners, renters, operators and managers of farms and their families, and merchants who do business with farm people should read the big, live magazine. FARM JOURNAL and FARMER'S WIFE is read by more than 2,800,000 families. Each issue has departments for men, women, boys and girls. Clean and wholesome, no liquor advertisements. The low subscription prices shown below make it a real bargain for folks who have farm interests.



Farm Journal and Farmer's Wife,
\$5 for ONE YEAR (12 issues) in Advance
Make this offer your own! - See Prices below.

Name _____
Please Print

R.F.D. _____ Box _____ or Street _____
Please Use Simple Code for prompt-delivery service.

P.O. _____ State _____

IMPORTANT: If you are already a subscriber put X here.

Send coupon direct to Farm Journal and Farmer's Wife, Dept. C, P. O. Box 797, Princeton, Indiana 47130, with enclosed fee (no risk). Canada and other Countries outside U. S. \$1.50 per year.

SEE
OTHER
SIDE

5c each

at lowest publishers' prices. Save time, trouble and expense and be assured of safe, fast service. Each magazine may be sent to a different name, if you like. Save \$1.00 or more by ordering for 2 years, or order for 3 years and save twice as much. Write us for magazines you want not listed here.

For the Whole Family

	1 year	2 years	3 years
Farm Journal & Farmer's Wife..	<input type="checkbox"/> \$1.00	<input type="checkbox"/>	<input type="checkbox"/> \$2.00
American Home	<input type="checkbox"/> 2.50	<input type="checkbox"/> \$4.00	<input type="checkbox"/> 5.00
Country Gentleman	<input type="checkbox"/> 1.00	<input type="checkbox"/>	<input type="checkbox"/> 2.00
Flower Grower	<input type="checkbox"/> 3.00	<input type="checkbox"/> 5.00	<input type="checkbox"/>
Photoplay	<input type="checkbox"/> 1.80	<input type="checkbox"/> 3.00	<input type="checkbox"/>
Reader's Digest	<input type="checkbox"/> 3.00	<input type="checkbox"/> 5.00	<input type="checkbox"/>
Saturday Evening Post	<input type="checkbox"/> 6.00	<input type="checkbox"/> 10.00	<input type="checkbox"/> 14.00
Pathfinder (News Magazine)....	<input type="checkbox"/> 2.50	<input type="checkbox"/> 4.00	<input type="checkbox"/> 5.00

For Womenfolks

Ladies' Home Journal	<input type="checkbox"/> 3.00	<input type="checkbox"/> 5.00	<input type="checkbox"/> 7.00
McCall's	<input type="checkbox"/> 2.50	<input type="checkbox"/> 4.00	<input type="checkbox"/> 6.00
Parents	<input type="checkbox"/> 3.00	<input type="checkbox"/> 4.00	<input type="checkbox"/> 5.00
True Romance	<input type="checkbox"/> 1.80	<input type="checkbox"/> 3.00	<input type="checkbox"/>
True Story	<input type="checkbox"/> 2.20	<input type="checkbox"/> 3.50	<input type="checkbox"/> 5.00
Woman's Home Companion	<input type="checkbox"/> 2.50	<input type="checkbox"/> 4.00	<input type="checkbox"/> 6.00

For Menfolks

American Fruit Grower	<input type="checkbox"/> 1.00	<input type="checkbox"/>	<input type="checkbox"/> 2.00
American Poultry Journal	<input type="checkbox"/> .50	<input type="checkbox"/> 5 yrs.	<input type="checkbox"/> 2.00
Breeder's Gazette	<input type="checkbox"/> 1.00	<input type="checkbox"/>	<input type="checkbox"/> 2.00
Mechanix Illustrated	<input type="checkbox"/> 1.80	<input type="checkbox"/> 3.50	<input type="checkbox"/> 5.00
Outdoors	<input type="checkbox"/> 2.00	<input type="checkbox"/> 3.00	<input type="checkbox"/> 4.00
Outdoor Life	<input type="checkbox"/> 2.50	<input type="checkbox"/> 4.00	<input type="checkbox"/> 5.50
Popular Mechanics	<input type="checkbox"/> 3.50	<input type="checkbox"/> 6.00	<input type="checkbox"/> 8.00
Popular Science	<input type="checkbox"/> 3.00	<input type="checkbox"/> 5.50	<input type="checkbox"/>
Poultry Tribune	<input type="checkbox"/> .50	<input type="checkbox"/> 5 yrs.	<input type="checkbox"/> 2.00

For Youngfolks

American Girl (Girl Scouts)	<input type="checkbox"/> 2.00	<input type="checkbox"/> 3.00	<input type="checkbox"/> 4.00
Boy's Life (Boy Scouts)	<input type="checkbox"/> 2.50	<input type="checkbox"/> 4.00	<input type="checkbox"/> 5.00
Senior Prom (Teens and Co-eds). .	<input type="checkbox"/> 2.40	<input type="checkbox"/>	<input type="checkbox"/>
Child Life (Up to 10 yrs.)	<input type="checkbox"/> 3.00	<input type="checkbox"/> 5.00	<input type="checkbox"/> 6.00
Jack & Jill (Up to 10 yrs.)	<input type="checkbox"/> 2.50	<input type="checkbox"/> 4.00	<input type="checkbox"/> 6.00

—MAIL TODAY WITH REMITTANCE DIRECT TO:—

FARM JOURNAL Subscription Service Dept.
P. O. Box 958, Philadelphia 5, Pa.

Enclosed find \$..... Send magazines marked "X."

Name First Name Middle Initial Last Name

R.F.D. Box or Street.....
Put route number above for prompt service.

P.O. State.....
NOTE: No orders accepted for addresses outside United States.

NOW OUR CUSTOMERS CAN SAVE MONEY ON
FAVORITE READING FOR ALL THE FAMILY
ORDER THESE BIG VALUE MAGAZINES



"ALL AROUND THE FARM" GROUP

ALL THREE for Only \$1.50

FARM JOURNAL and FARMER'S WIFE.....1 year
AMERICAN FRUIT GROWER.....1 year
AMERICAN POULTRY JOURNAL.....1 year



"GET ACQUAINTED" BARGAIN OFFER

(for new subscribers only)

PATHFINDER

America's News Magazine

(Every other week)—Over 1,200,000
subscribers like it—you will, too.

7 Month Trial Offer—Only \$1

MAIL TODAY WITH REMITTANCE DIRECT TO: _____

FARM JOURNAL Subscription Service Dept.
P. O. Box 958, Philadelphia 5, Pa.

Enclosed find \$.....Send magazines marked "X."

Name First Name Middle Initial Last Name
Please Print:

R.F.D. Box of Street
Put route number above for prompt service.

P.O. State
NOTE: No orders accepted for addresses outside United States.

Recommended by

SPRING HILL NURSERIES CO.

SEND

For your copies of this exciting poultry magazine

TODAY

- HUNDREDS OF EASY PROFIT MAKING IDEAS
- FREE—BEAUTIFUL 4-COLOR POULTRY PICTURES IN WINTER ISSUES SUITABLE FOR FRAMING
- FREE ANSWERS TO YOUR POULTRY PROBLEMS
- ADVANCE NEWS FROM THE LARGEST POULTRY EXPERIMENTAL FARMS
- HUGE WOMEN'S AND HOMEMAKING SECTION
- LARGE GARDEN AND ORCHARD DEPT.
- LATEST NEWS ON TRACTORS AND FARM MACHINERY
- COMICS • CARTOONS

You will get hundreds of easy to read illustrated pages chock full of simple, clever, money-making ideas for both men and women. Features that make enjoyable and profitable reading for the whole family.

The AMERICAN WAY PAYS

500,000 families who read American Poultry Journal regularly have found that raising chickens the American-Way, following monthly hints, helps and information, pays off in more eggs and GREATER PROFITS.

Take Advantage of This Bargain Offer Today

AMERICAN POULTRY JOURNAL

P. O. Box 958

Philadelphia 5, Pa.

- ONE YEAR 50c or FIVE YEARS \$2
- TWO YEARS \$1 (BARGAIN OFFER)

Mark your choice — Send money at our risk

Name

R.F.D. Box or Street

P.O. State

Canada and Countries outside U. S. \$1.00 per year

AMERICAN POULTRY Journal
EST. 1914



Voice of the Poultry Industry

Mail this coupon NOW

NEW, LILLIPUTIAN CHRYSANTHEMUMS

An entirely new section of hardy Chrysanthemum. More dwarf than anything yet seen. Nice, round, symmetrical plants grow only 10 to 15 inches tall. Extremely free flowering, often up to 500 blooms per plant. The dwarf, spreading plants are ideal for potting and are perfectly hardy for outdoor planting. Blooms are double and of good size. Without a doubt the finest innovation for years. All varieties have won Royal Horticulture Society Medal and most varieties have won additional honors.

DOC—23C1—Low, broad plants with large 2 inch, double, light rose-pink blooms. Highly recommended.

EMU—23C2—Medium size, double flowers of striking deep rosy-purple in profusion. Very striking.

HAPPY—23C3—Low, broad plant with large, double 2½ inch, brilliant yellow blooms. Profuse blooming.

PHEASANT—23C4—Large anemone-centered flowers that open bright red and change to light rose.

Choice of above 4 varieties, 75c each; 3 for \$1.95
COLLECTION 23C5—Garden of 4, one of each variety listed above. (labeled) **4 for \$2.50**



Best New English CHRYSANTHEMUMS

Giant, double, exhibition flowering varieties for middle west. All September and October blooming with massive, double blooms in profusion.

ALABASTER—23C6—Incurved, white.

CHESTER CASTLE—23C7—Salmon-pink.

INDIANA—23C8—Huge, velvet-crimson.

GOLD STANDARD—23C9—Bright yellow.

LESTER FELTON—23C10—Large, purple.

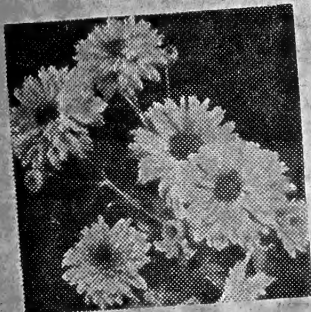
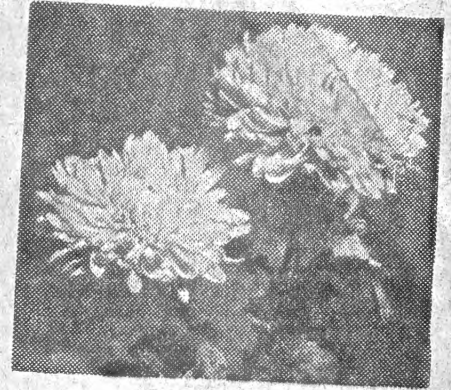
TIGER—23C11—Amber-copper-bronze.

PRIMROSE—23C12—Large, creamy-white.

Choice of above 7 English chrysanthemums, 42c each; 3 for \$1.15; 7 for \$2.50.

ENGLISH MUM SPECIAL — 23C13—one each red, white, pink, yellow, bronze and purple. All giant, double varieties.
6 For \$1.75

(Unlabeled).



GIANT SINGLE MUMS

Abundance of flowers unexcelled for cutting and garden beauty. Hardy, easy to grow, early blooming, large flowering varieties.

TIFFANY ROSE—23C14—Bright pink.

JOAN HELEN—23C15—Rosy-purple.

PRIMULA—23C16—Brightest yellow.

RED BANK—23C17—Large, crimson.

ORCHID—23C18—Soft lavender.

NORTH STAR—23C19—Snow-white.

Choice of above six single mums, 37c each; 3 for 95c; 6 for \$1.80

GIANT SINGLE MUM SPECIAL

23C20—One each red, pink, bronze, white and purple. (Unlabeled).

5 for \$1.19



Hardy Button or Pompon Mums

Small, tight, perfectly formed, double blooms in clusters make colorful garden plants and the blooms are very popular for bouquets. Varieties offered are the best of their color for hardiness, vigorous growth and profusion of blooms.

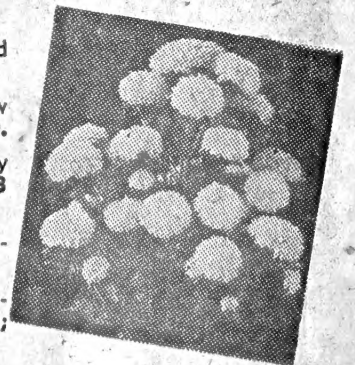
RUBY POMPON—23C21—Finest red in every way. 38c each; 3 for \$1.00.

CHIQUITA—23C22—Our finest, new yellow button. 45c each; 3 for \$1.20.

LITTLE ESKIMO—23C23—Early blooming, pure white. 38c each; 3 for \$1.00.

ROSITA—23C24—Lovely Persian rose-pink. 45c each; 3 for \$1.20.

SEPTEMBER BRONZE—23C25—Brilliant, vivid, golden-bronze. 38c each; 3 for \$1.00.



BUTTON MUM SPECIAL

23C26—Certified \$1.80 catalog value. One each red, pink, bronze, yellow and white. Guaranteed best varieties (unlabeled). No broken collections.

5 for \$1.15

Dwarf Hardy ASTERS

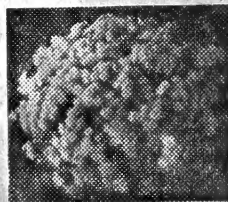
Compact mounds like picture. Hundreds of blooms this fall on each plant, perfectly hardy. Grow from year to year without replanting.

NIobe—23P27—Pure snow white.

LILACTIME—23P28—Vivid lilac.

COUNTESS OF DUDLEY—23P29—Lilac-pink.

CONSTANCE—23P30—A pale shell pink.



Choice of above 4 hardy, dwarf asters, 35c each; 8 for \$2.10

SPECIAL FALL FLOWERING, DWARF ASTER GARDEN

23P31—One each of above 4 varieties. (Labeled.) No broken collections.

4 FOR \$1.12

TALL, CUT FLOWER, FALL ASTERS

The following are the finest cut-flower, hardy asters. They grow 3 to 4 ft. tall and the flowers are produced in the greatest profusion through August and September. All plants will bloom for you this fall.

BEECHWOOD CHALLENGER—23P32—Nearest true red.

VIOLETTA—23P33—Rich, deep violet.

PALMYRA—23P34—Bright pink blooms.

GIANT LAVENDER—23P35—Large, clear lavender.

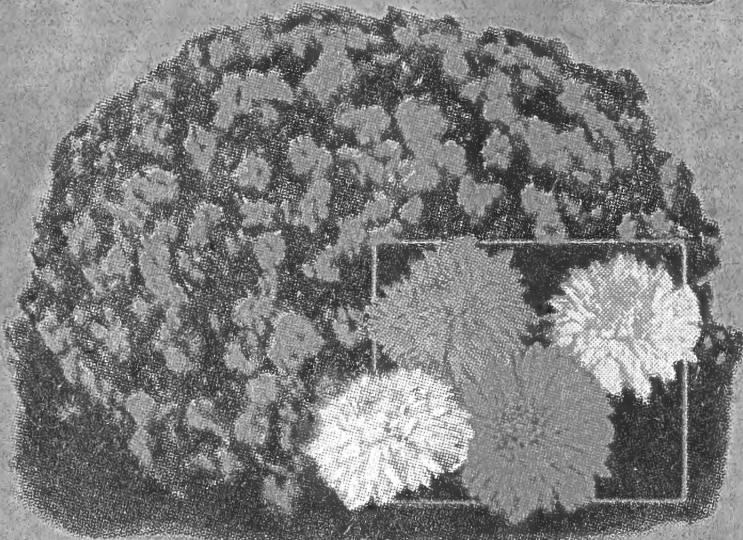
MT. EVEREST—23P36—Best, tall, white.

Choice of above 5 hardy asters, 35c each; 3 for 90c; 10 for \$2.85

SPRING HILL'S GIGANTIC PLANT

SALE

You can't beat these prices



CUSHION MUM SPECIAL

24C1—One each Pink, Red, Yellow, and White. Fully guaranteed. Improved, early, free flowering, dwarf, mound-shaped hardy strains that will bloom for you this year.

Certified \$1.44
catalog value.

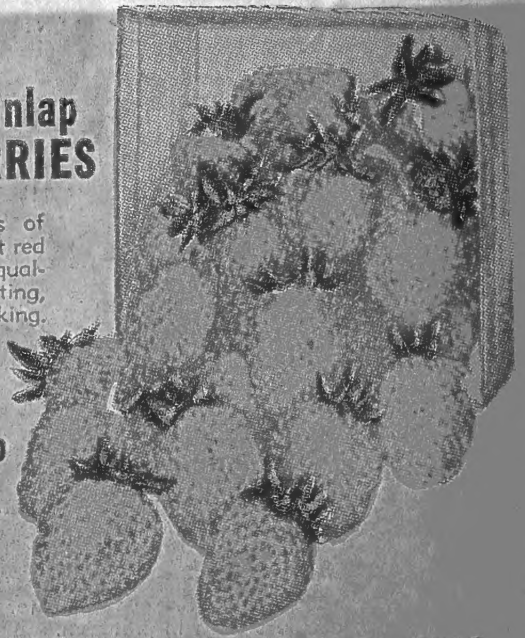
4 for 98¢

Senator Dunlap STRAWBERRIES

Enormous crops of large, sweet, bright red fruit of excellent quality. Fine for eating, freezing, and cooking.

25 for 75c
100 for 2.35
1,000 for 12.00

Other Strawberries see page 7.



THOUSANDS OF EVERGREENS
READY TO GO!

**BIG SAVINGS
IN EVERGREENS**
when you
COME to the nursery

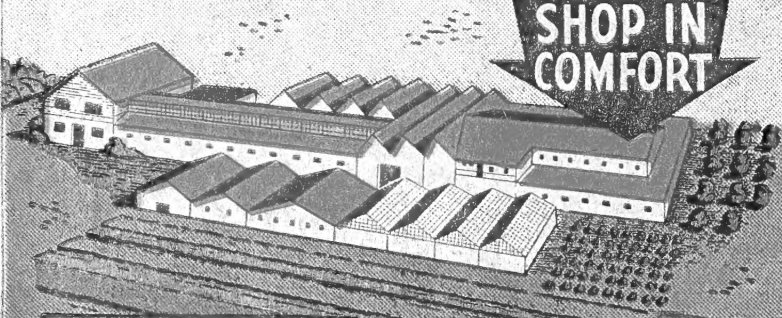


WE WANT
YOU TO TAKE
US HOME
WITH YOU!



SAVE AT AMERICA'S
LARGEST NURSERY SALES SHED

SHOP IN
COMFORT



GUARANTEED
SATISFACTION

FREE GIFT FOR YOU

One hardy flowering size Forsythia Golden Bell free to each family that visits the nursery this spring. Offer can be changed without notice, but a shrub of equal value will be given free.

For those who mail an order include FREE Forsythia. Free Forsythia will not be mailed unless you include or write it on your order.



SEC. 34.66 P. I. & R.
U. S. POSTAGE
PAID
PERMIT NO. 3
TIPP CITY, OHIO

Librarian
U.S. Department of Agriculture
Washington 25, D.C.

SPRING HILL NURSERIES, Tipp City, Ohio, Established 1849